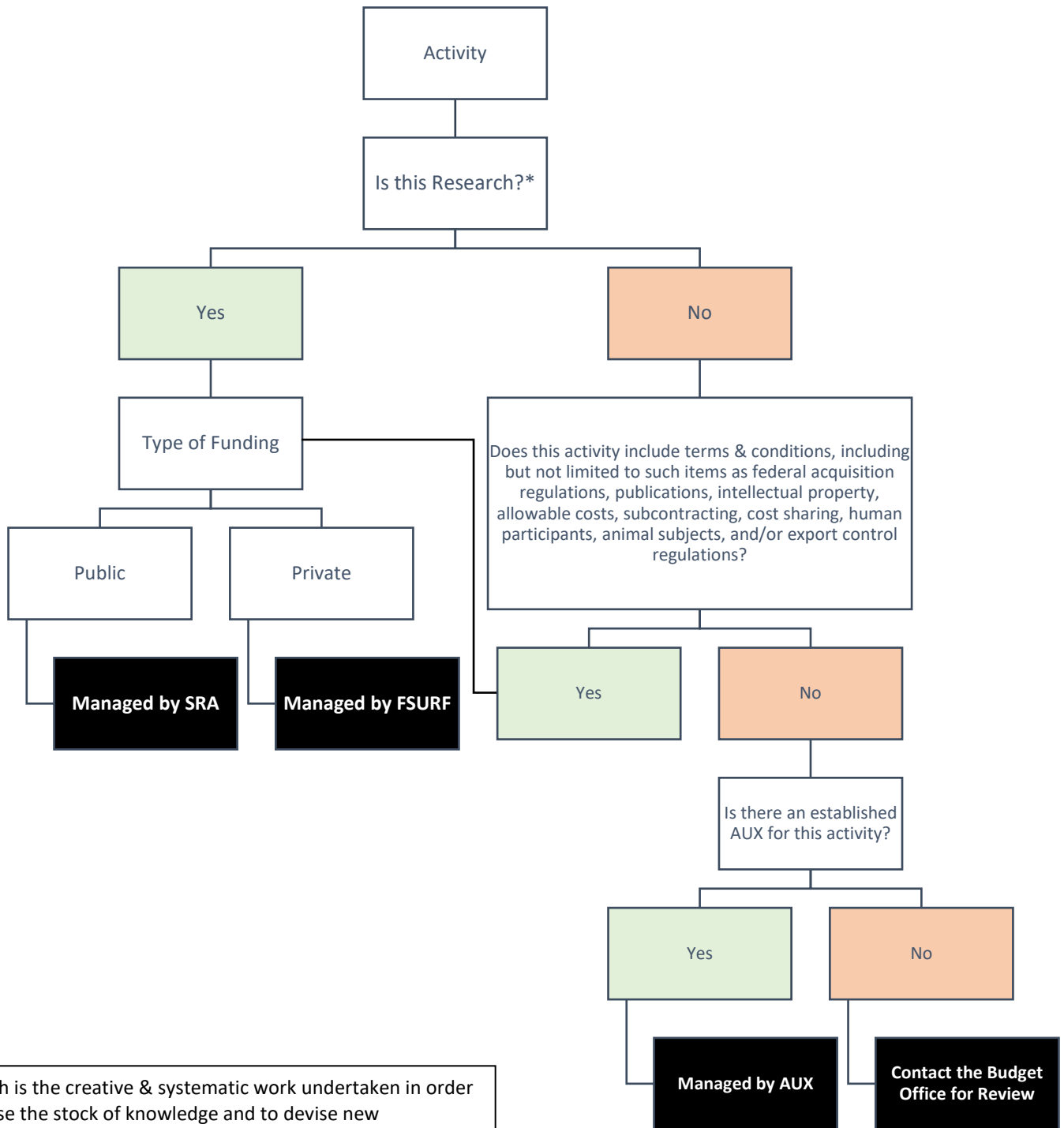


# Sponsored Project vs. Auxiliary Decision Tree



\*Research is the creative & systematic work undertaken in order to increase the stock of knowledge and to devise new applications of available knowledge.

**Legal Support, Justification, and Review**

- Placement of Funds Policy 7A-17
- Controller’s Misc Deposit Guide
- OMNI Depts, Aux, and Designation Policy 4-OP-D-1
- BOG Regulation 9.013 Auxiliary Operations
- Florida Statute 1004.22 Divisions of Sponsored Research at State Universities