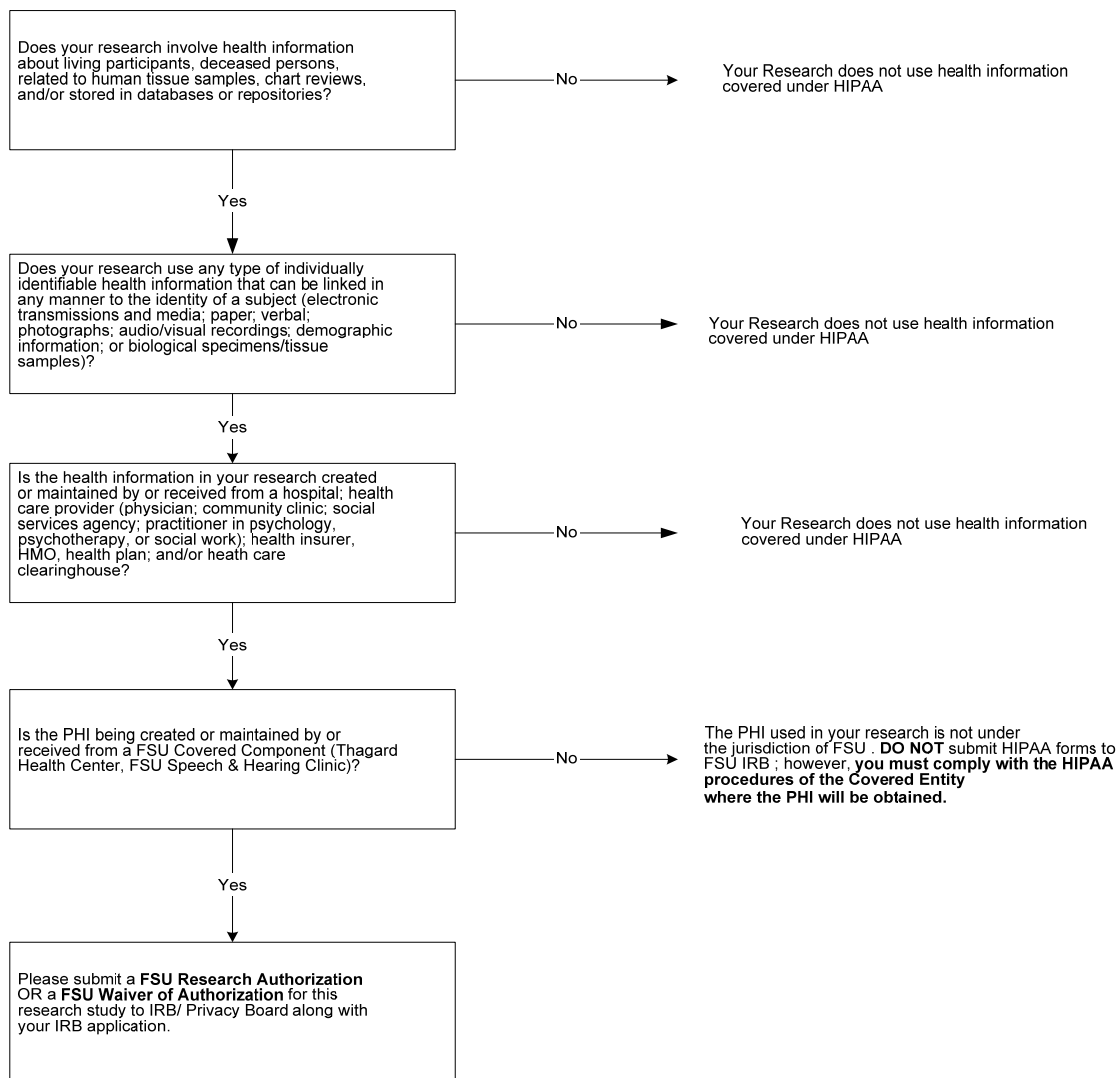


Decision Chart -HIPAA and Research



Definitions for decision chart:

Covered Entity - Hospital; health care provider (physician; community clinic; social services agency; practitioner in psychology, psychotherapy, or social work); health insurer, HMO, health plan; AND/OR health care clearinghouse.

PHI - Protected Health Information is any individually identifiable health information that is created or maintained by a Covered Entity.