

# Impact of Socio-Ecological Systems Changes on Rural Communities in Cambodia

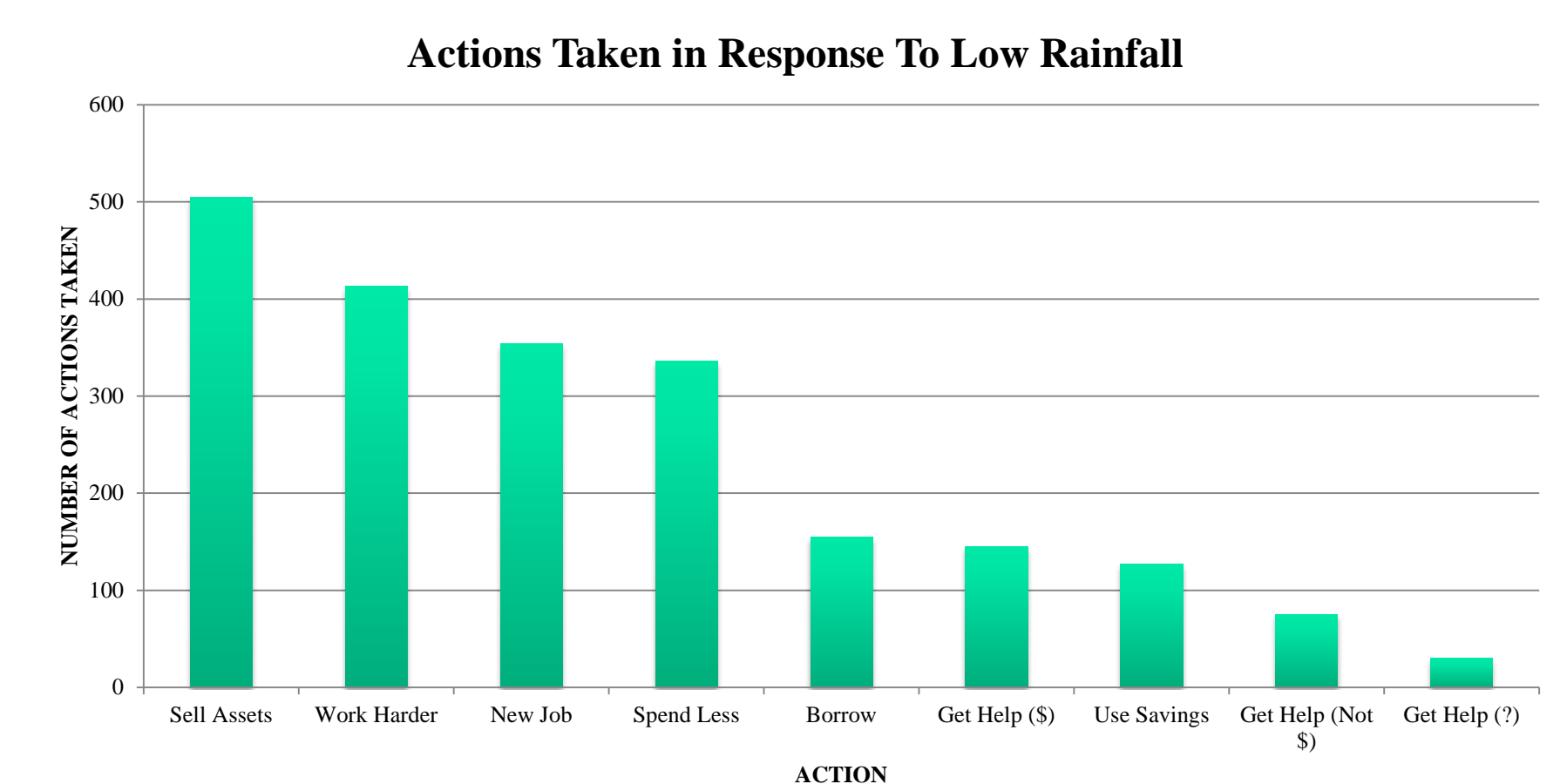
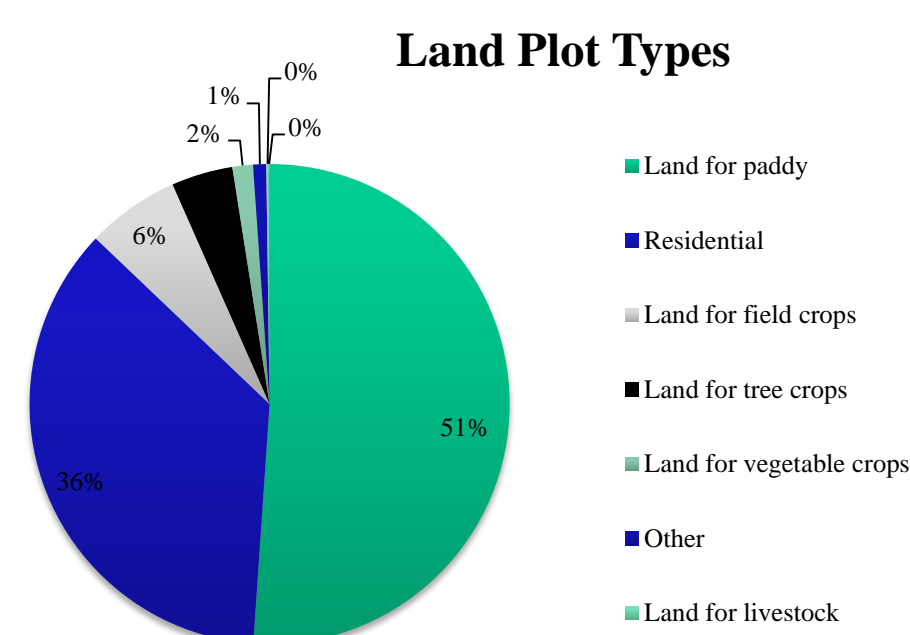
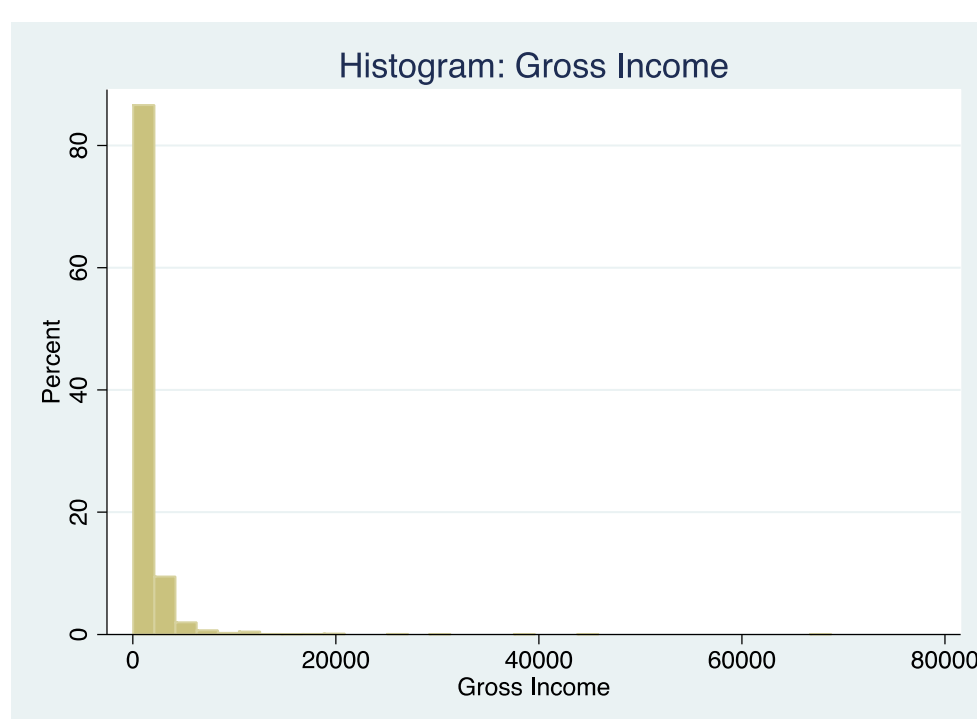
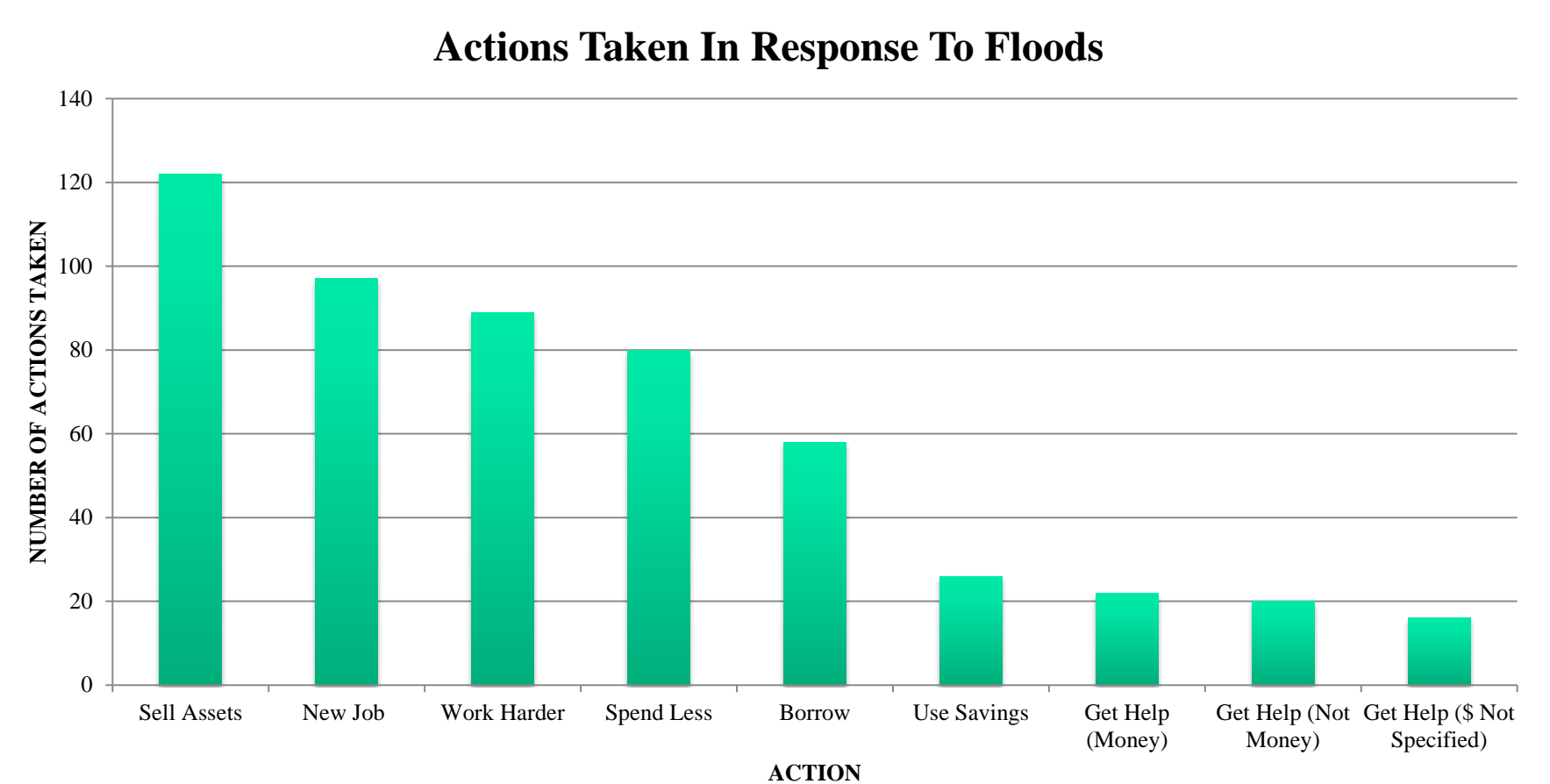
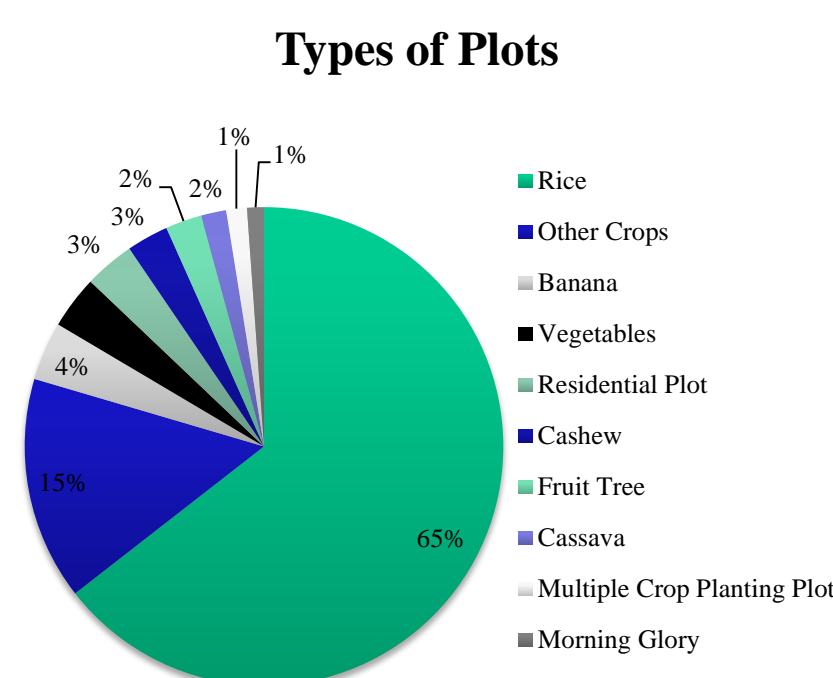
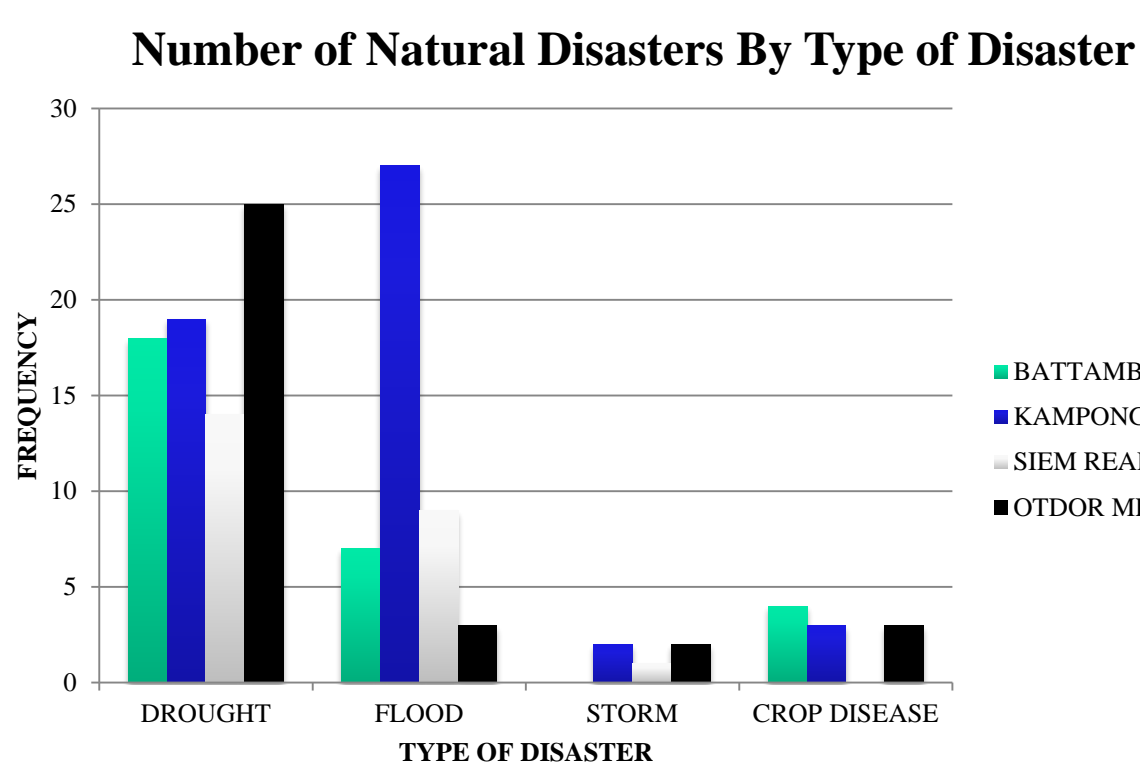
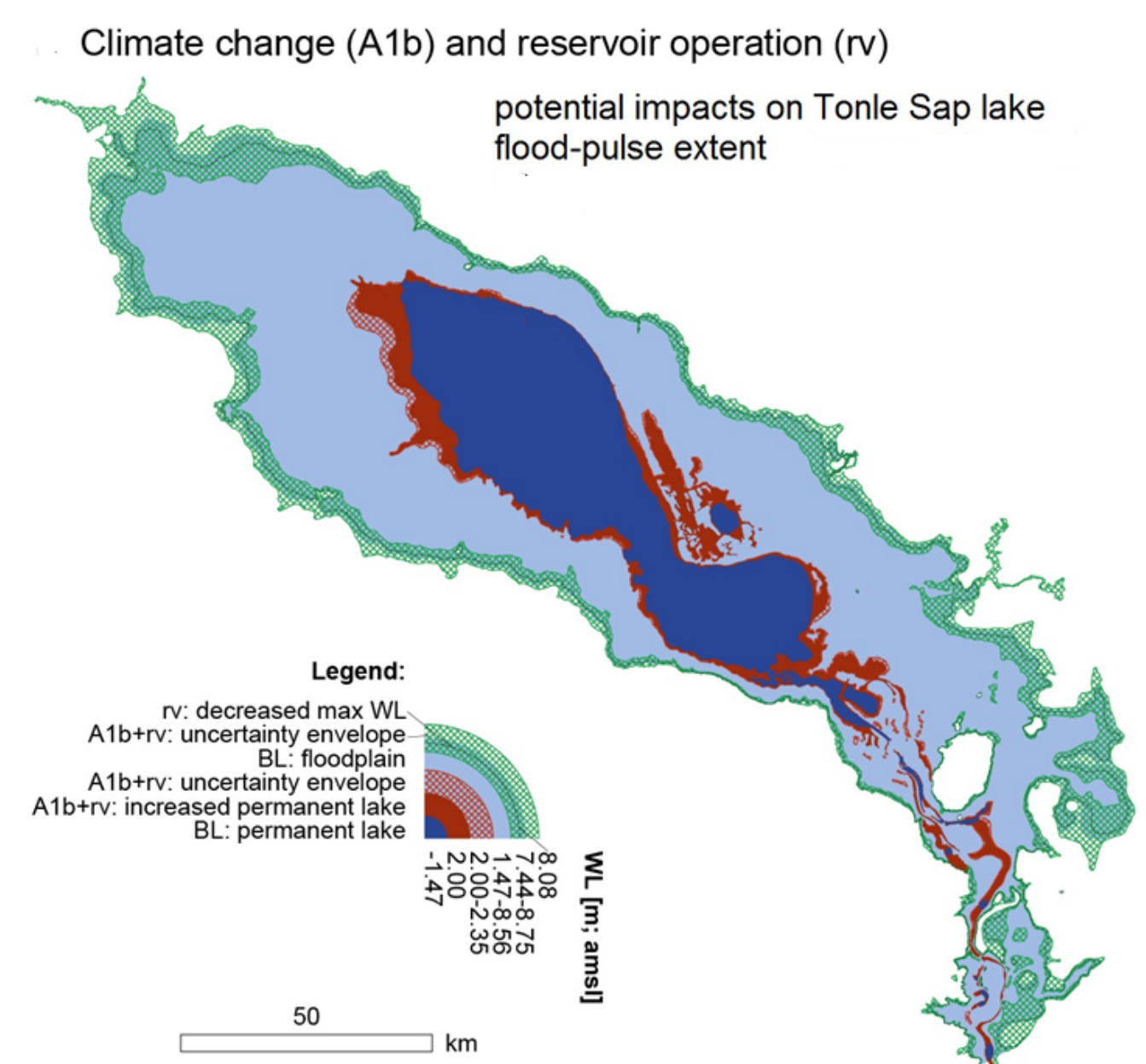
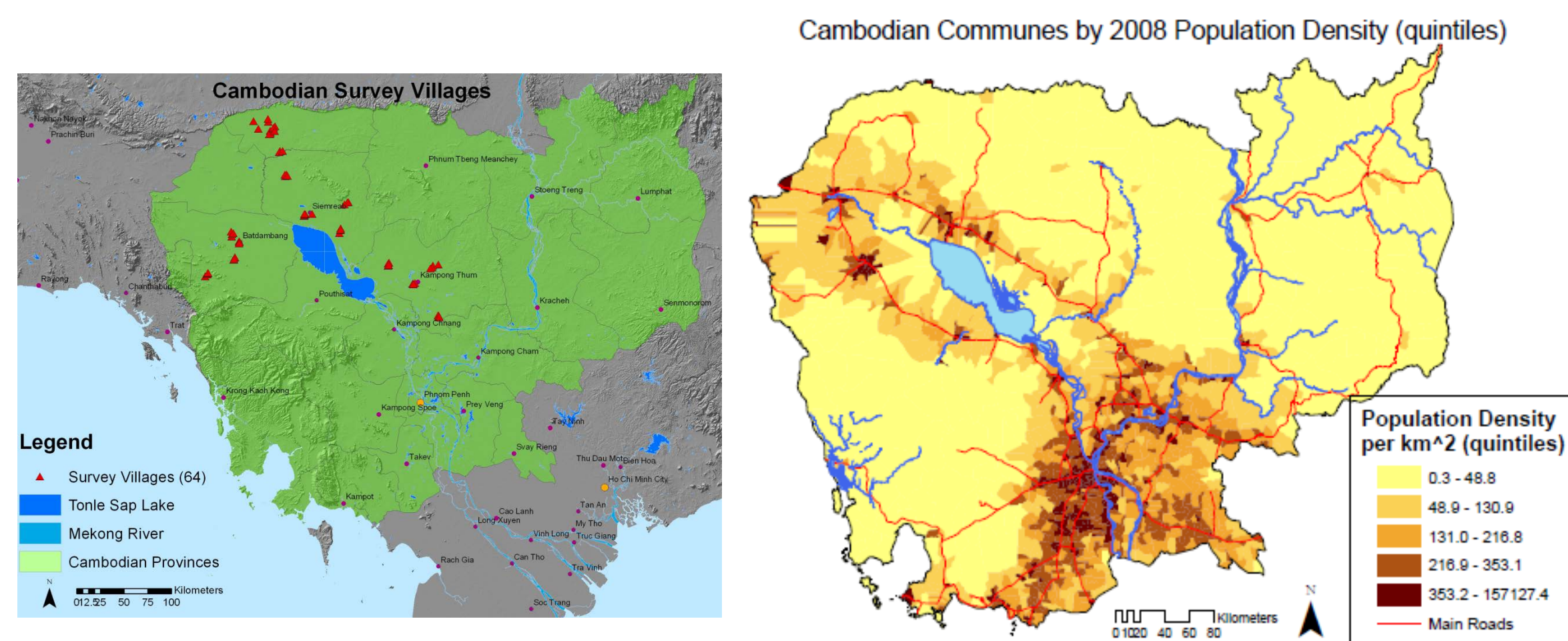
## Primary Research Questions:

- *What are the impacts on rural-urban economic and social linkages in Cambodia due to unprecedented hydrologic/flood changes occurring?*
- *How will rural village populations in Cambodia respond to changes to the hydrological system upon which they depend?*

## Primary Data Sources:

- Socio-Economic: survey of 2417 households in 64 villages in 4 provinces; Cambodian 1998/2008 Census; 2004/2011 SES Surveys;
- Physiographic: soil surveys, historical Mekong flood-pulse spatial extents, modeled changes to Mekong flood-pulse under climate and hydropower scenarios

## Initial Findings:



John Felkner, Assistant Professor, Urban & Regional Planning, jfelkner@fsu.edu, 850-645-1352. Project FSU Website: <http://coss.fsu.edu/mekong/content/home>

- ### Next Steps: 3 papers being produced:
- Analysis of socio-economic results
  - Additional analysis in impact of changes to ecosystem service provision modeled using InVEST (Natural Capital Project, Stanford University, under scenarios of future hydropower, climate change and urbanization)
  - Publications of Workshop held in Cambodia in Cambodian Journal of Natural History