

COLLABORATIVE COLLISION 2018



Tuesday Oct. 16th | 4-7 p.m.
FSU Alumni Center

Presented by:



The Office of Proposal Development

opd.fsu.edu

COLLABORATIVE COLLISION 2018

Agenda

- 4:00 p.m. Pre-mingle**
- 4:15 p.m. Welcome**
Dr. Gary K. Ostrander
Vice President for Research
- 4:30 p.m. Keynote Address**
Dr. Bindu Nair
*Deputy Director, Basic Research Office
Department of Defense*
- 5:00 p.m. Poster Session 1**
- 5:30 p.m. Poster Session 2**
- 6:00 p.m. Reception**

Keynote Speaker

Dr. Bindu Nair

Dr. Bindu Nair is the Deputy Director for Basic Research within the Office of the Secretary of Defense (OSD). In this role, she is responsible for oversight and coordination of the Department's \$2.2B investment in basic science. Dr. Nair previously served as Deputy Director of OSD's Human Performance, Training and Biosystems Directorate.

Prior to OSD, Dr. Nair worked for the Department of the Army with oversight responsibilities over the science and technology program in power and energy. She has worked in the DoD laboratory system at Natick Soldier Research, Development, and Engineering Center as well as in private industry at Foster Miller.

Her research expertise is in the field of Material Science and Engineering including nanomaterials, polymers, and organic electronic materials. Dr. Nair has published primarily in membrane and materials development fields and holds patents in fuel cell technologies. She holds a B.Sc from the University of Florida and a Ph.D. from the Massachusetts Institute of Technology in Materials Science and Engineering.



Collaborative Collision Seed Fund

New this year, the Office of Proposal Development is pleased to announce the availability of competitive funding for project teams that form as a result of Collaborative Collision.

The Collaborative Collision seed fund provides up to \$25,000 to the most promising new team to form as a result of connections made at Collaborative Collision events. Collaborative Collision grants are intended to catalyze team development, and allow a new team to position themselves to seek external funding for a new research initiative by demonstrating a history of successful collaboration. Grant recipients are expected to work with the Office of Proposal Development to submit external funding proposals within one year of the conclusion of a Collaborative Collision award.

Applicant teams to the seed fund must have attended the corresponding Collaborative Collision, and must not have previously co-authored any grant proposals or peer reviewed articles.

Full program details may be found at:

research.fsu.edu/CollaborativeCollision



Participants

Laurie Abbott

College of Nursing
labbot@fsu.edu

Research Interest(s):

- Rural Health
- Health Promotion



Jonathan Adams

School of Information
jladams@fsu.edu

Research Interest(s):

- Machine Learning
- Artificial Intelligence
- Autonomous Aerial Systems



Farrukh Alvi

College of Engineering
alvi@eng.famu.fsu.edu

Research Interest(s):

- Experimental Fluid Dynamics
- High Speed Flows
- Flow and Noise Control



Olubenga Anubi

Electrical and Computer Engineering
anubi@eng.famu.fsu.edu

Research Interest(s):

- Resilient, Robust and Adaptive Control
- Real-time Optimization, Vehicle Dynamics and Control
- Robotics

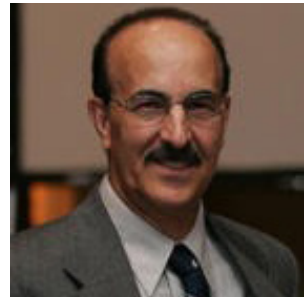


Bahram Arjmandi

Nutrition, Food, and Exercise Sciences
barjmandi@fsu.edu

Research Interest(s):

- Osteoarthritis
- Osteoporosis
- Cardiovascular disease



Mandy Bamber

College of Nursing
mbamber@fsu.edu

Research Interest(s):

- Mindfulness-Based Interventions



Hank Bass

Biological Science

bass@bio.fsu.edu



Research Interest(s):

- Plant genomics & chromatin structure
- 3D cell imaging with deconvolution fluorescence microscopy
- g-quadruplex DNA

Claire Berryman

Nutrition, Food, and Exercise Sciences

cberryman@fsu.edu



Research Interest(s):

- Nutritional Physiology
- Metabolism
- Hypoxia

Pradeep Bhide

Biomedical Sciences

pradeep.bhide@med.fsu.edu



Research Interest(s):

- Developmental neuroscience
- Cognitive neuroscience
- Movement disorders

Mark Bourassa

Center for Ocean Atmospheric
Prediction Studies
mbourassa@fsu.edu



Research Interest(s):

- Air/Sea Interaction
- Remote Sensing
- Ocean/wave/atmosphere Modeling

Sandra Brooke

Coastal and Marine Lab
sbrooke@fsu.edu



Research Interest(s):

- Deep sea ecology
- Coral biology
- Chemosynthetic ecosystems

Joedrecka Brown Speights

Family Medicine and Rural Health
joedrecka.brown@med.fsu.edu



Research Interest(s):

- Health Equity
- Maternal and Child Health
- Wellness/Mental Health

Kristina Buhrman

Religion

kbuhrman@fsu.edu

Research Interest(s):

- Religion
- Science
- Environment



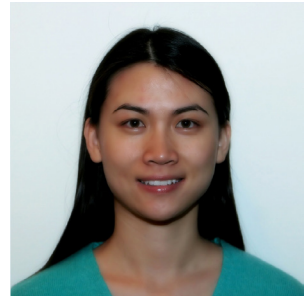
Hongyuan Cao

Statistics

hcao@fsu.edu

Research Interest(s):

- Clinical trials
- High-throughput Omics data analysis,
- Mental health outcome



Henry Carretta

Behavioral Sciences and Social Medicine

henry.carretta@fsu.edu

Research Interest(s):

- Service utilization in adults with autism
- Chronic disease epidemiology and the social determinants of health
- Service utilization in adults with Alzheimer's disease



Rob Carroll

Political Science

robcarrollFSU@gmail.com



Research Interest(s):

- International relations
- Formal models
- Methodology

Sukanya Chakrabarti

Theatre

schakrabarti@fsu.edu



Research Interest(s):

- Oral history
- Globalization and transnationalism studies
- Experimental performance-making

Peter Cheetham

Center for Advanced Power Systems

cheetham@caps.fsu.edu



Research Interest(s):

- High voltage engineering
- Cryogenics
- Electrical properties of materials

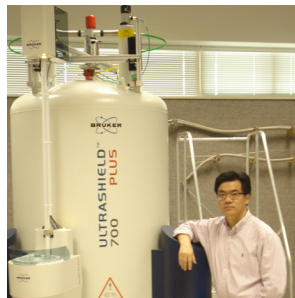
Banghao Chen

Chemistry and Biochemistry

chen@chem.fsu.edu

Research Interest(s):

- Chemistry, Materials & Environmental



Irinel Chiorescu

Physics

ichiorescu@fsu.edu

Research Interest(s):

- Experiments in quantum control
- Quantum coherence
- Quantum materials



Juyenong Choi

Civil and Environmental Engineering

jchoi@eng.famu.fsu

Research Interest(s):

- Infrastructure planning in terms of sustainability and resilience
- Demolition planning
- System-of-systems



Russell Clayton

Communication
rclayton@fsu.edu

Research Interest(s):

- Health Communication
- Media Psychology
- Psychophysiology



Sabrina Dickey

Nursing
sldickey@fsu.edu

Research Interest(s):

- Cancer communication
- Minority Health Disparities
- Quality of life among cancer survivors



James Du

Sport Management
jdu3@fsu.edu

Research Interest(s):

- Sport Management and Public Health



David Eccles

Educational Psychology and Learning Systems
deccles@fsu.edu



Research Interest(s):

- The psychology of skill acquisition
- Skilled and expert individual and team performance
- Human performance under stress

Sarah Eyerly

Music
seyerly@fsu.edu



Research Interest(s):

- Acoustic ecology
- Sound studies
- Audible history

Debi Fadool

Biological Science
dfadool@bio.fsu.edu



Research Interest(s):

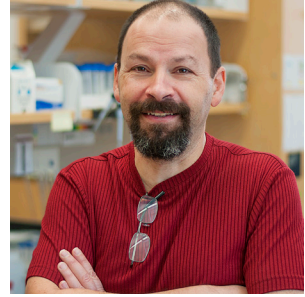
- Obesity
- Ion channel modulation
- Olfaction

James Fadool

Biological Science
jfadool@bio.fsu.edu

Research Interest(s):

- Genetics
- Developmental Biology
- Neural Degeneration



Kelly Farquharson

Communication Science and Disorders
kelly.farquharson@cci.fsu.edu

Research Interest(s):

- Literacy disorders
- Speech and language development
- Children in poverty/ low income/ homelessness



Heather Flynn

Behavioral Sciences and Social Medicine
heather.flynn@med.fsu.edu

Research Interest(s):

- Mental Health
- Substance Abuse
- Psychotherapy



Jens Foell

Psychology
foell@psy.fsu.edu

Research Interest(s):

- Personality
- Neuropsychology
- Mental health



Simon Foo

Electrical and Computer Engineering
sfoo@fsu.edu

Research Interest(s):

- Machine Learning
- Solar Cells

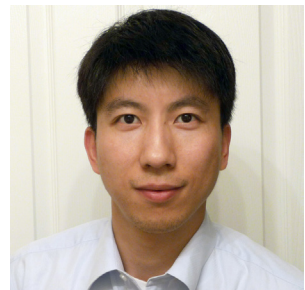


Hanwei Gao

Physics
hgao3@fsu.edu

Research Interest(s):

- Materials
- Optics
- Electronics



Sonia Haiduc

Computer Science
shaiduc@cs.fsu.edu

Research Interest(s):

- Software engineering
- Computer science education
- Software for social good



Greg Hajcak

Biomedical Sciences
greg.hajcak@med.fsu.edu

Research Interest(s):

- Cognitive neuroscience
- Depression
- Anxiety



Daniel Hallinan

Chemical and Biomedical Engineering
dhallinan@fsu.edu

Research Interest(s):

- Nanostructured Polymer Materials
- 3D Printing Solid Lithium Batteries
- Transport in Polymer Membranes for Gas and Water Separations



Kimberly Harris

Dedman School of Hospitality
kharris@fsu.edu

Research Interest(s):

- Food safety
- Consumer behavior
- International food and beverage



Hans Hassell

Political Science
hans.hassell@fsu.edu

Research Interest(s):

- Representation
- Government Responsiveness
- Media



Matt Hauer

Sociology
mehauer@fsu.edu

Research Interest(s):

- Demography
- Climate change
- Population projections



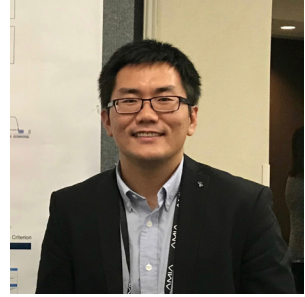
Zhe He

Information

zhe.he@cci.fsu.edu

Research Interest(s):

- Biomedical Informatics
- Clinical Research Informatics
- Data Mining and Machine Learning



Stephen Hennigar

Nutrition, Food, and Exercise Sciences

shennigar@fsu.edu

Research Interest(s):

- Nutrition, Vitamin, and Mineral Metabolism
- Inflammation/infection



Robert Hickner

Nutrition, Food, and Exercise Sciences

rhickner@fsu.edu

Research Interest(s):

- Microcirculation
- Fat metabolism
- Exercise



Phil Hiver

Teacher Education
phiver@fsu.edu



Research Interest(s):

- Second and foreign language learning and instruction
- Psycho-social factors in learning and teaching
- Complex and dynamic research methods for education

Shuyuan Ho

Information
smho@fsu.edu



Research Interest(s):

- Disinformation
- Cloud forensics
- Trusted human computer interaction

Amy Huber

Interior Architecture and Design
amattinglyhuber@fsu.edu



Research Interest(s):

- Persuasive communication
- Wellness environments
- Emerging technology

Roxanne Hughes

National High Magnetic Field Laboratory
hughes@magnet.fsu.edu

Research Interest(s):

- Building the STEM workforce
- STEM identity
- Improving the STEM climate



Patrice Iatarola

Educational Leadership and Policy Studies
piatarola@fsu.edu

Research Interest(s):

- Education policy
- Inequality in urban areas



Mark Isaac

Economics
misaac@fsu.edu

Research Interest(s):

- Experimental research on: Public goods (e.g. free riding in alliances in Minerva area 3); auctions; and land acquisition



Stephanie James

Art

sljames@fsu.edu

Research Interest(s):

- How making things/objects can create meaningful relationships
- Space and how it impacts on our well-being



Pascal Jean-Pierre

Behavioral Sciences and Social Medicine

pascal.jean-pierre@med.fsu.edu

Research Interest(s):

- Cancer and treatment-related neurocognitive dysfunction
- Chronic diseases, brain structural and cognitive dysfunction
- Measurement development and psychometric validation



Lyndsay Jenkins

Educational Psychology and Learning Systems

ljenkins@fsu.edu

Research Interest(s):

- Bullying
- Youth mental health
- Bystander behavior



Felecia Jordan Jackson

Communication

felecia.jordan@cci.fsu.edu



Research Interest(s):

- Building interpersonal relationships
- Verbal aggression
- Instructional communication and student learning

Shawn Kantor

Economics

skantor@fsu.edu



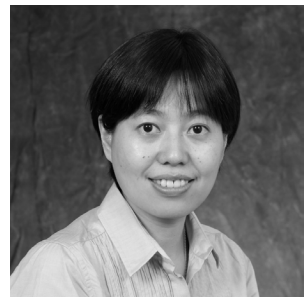
Research Interest(s):

- Economics of innovation
- Technology diffusion
- Economic growth and development

Fengfeng Ke

Educational Psychology and Learning Systems

fke@fsu.edu



Research Interest(s):

- Digital game-based learning
- Simulation and immersive learning for STEM
- Mixed reality

Charalambos Konstantinou

Electrical and Computer Engineering
ckonstantinou@fsu.edu

Research Interest(s):

- Cyber-Physical Systems Security
- Power Systems Resilience and Control



Steven Lenhert

Biological Science
lenhert@bio.fsu.edu

Research Interest(s):

- Nanotechnology
- Synthetic biology
- Drug discovery



Cathy Levenson

Biomedical Sciences
cathy.levenson@med.fsu.edu

Research Interest(s):

- Traumatic Brain Injury (TBI)
- Concussion



Lichun Li

Industrial and Manufacturing Engineering
lichunli@eng.famu.fsu.edu

Research Interest(s):

- Game theory
- Control theory
- Cyber-human-physical systems



Richard Liang

High Performance Materials Institute
zliang@fsu.edu

Research Interest(s):

- Data-driven manufacturing
- Nanosensors and multifunctional materials/devices
- structural composites and nanocomposites



Xiuwen Liu

Computer Science
liux@cs.fsu.edu

Research Interest(s):

- Deep learning
- Natural language processing
- Reinforcement learning



Elizabeth Madden

Communication Science and Disorders
ebmadden@fsu.edu

Research Interest(s):

- Aphasia
- Reading
- Communication disorders



Iskandaria Masduki

Center for Information
Management & Educational Services
imasduki@fsu.edu

Research Interest(s):

- Competency research
- Evidence-based assessment
- Learning and cognition



Sophie McCoy

Biological Science
mccoy@bio.fsu.edu

Research Interest(s):

- Marine biology
- Biogenic minerals
- Pollution and climate



Graham McDougall

Nursing

gmcDougall@fsu.edu

Research Interest(s):

- Cognitive Aging
- Memory
- Precision Health



Patrick Merle

Communication

pmerle@fsu.edu

Research Interest(s):

- Terror management theory
- Crisis/risk communication
- Teaching abroad



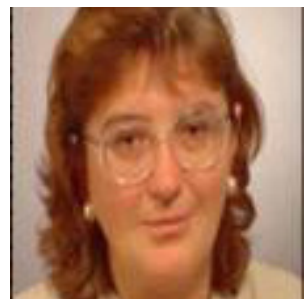
Anke Meyer-Baese

Scientific Computing

ameyerbaese@fsu.edu

Research Interest(s):

- Brain and cancer research
- Radiomics/radiogenomics for prostate cancer
- Alzheimer research



Derek Nee

Psychology
nee@psy.fsu.edu



Research Interest(s):

- fMRI
- Transcranial magnetic stimulation
- Cognitive control

Richard Nowakowski

Biomedical Sciences
richard.nowakowski@med.fsu.edu



Research Interest(s):

- Genetics
- Neuroscience

William Oates

Mechanical Engineering
woates@fsu.edu



Research Interest(s):

- Quantum computing
- Artificial intelligence
- Multifunctional materials

Eren Ozguven

Civil and Environmental Engineering
eozguven@eng.famu.fsu.edu



Research Interest(s):

- Emergency logistics
- Smart cities
- Intelligent mobility

Jill Pable

Interior Architecture and Design
jpable@fsu.edu



Research Interest(s):

- Homelessness
- Built environment
- Environmental psychology

Michele Parker

Family and Child Sciences
mparker5@fsu.edu



Research Interest(s):

- Family effects of autism
- Integrative care and family therapy
- Physiology and personal relationships

Michelle Parvatiyar

Nutrition, Food, and Exercise Sciences

mparvatiyar@fsu.edu

Research Interest(s):

- Exercise science
- Cardiovascular risk factors
- Inflammatory disease



Christopher Patrick

Psychology

cpatrick@psy.fsu.edu

Research Interest(s):

- Psychological assessment
- Neurophysiology
- Mental health and adaptive performance



George Pesta

Criminology and Criminal Justice

gpesta@fsu.edu

Research Interest(s):

- All areas in criminology and criminal justice



Carrie Pettus-Davis

Social Work

cpettusdavis@fsu.edu

Research Interest(s):

- Criminal justice
- Behavioral health
- Technological applications for treatment interventions



Scott Pickett

Behavioral Sciences and Social Medicine

scott.pickett@med.fsu.edu

Research Interest(s):

- Psychological Trauma
- Emotion Regulation
- Sleep Disruption



Qinchun Rao

Nutrition, Food, and Exercise Sciences

qrao@fsu.edu

Research Interest(s):

- Food Safety
- Food Quality
- Food Nanotechnology



Chet Ray

Nutrition, Food, and Exercise Sciences
caray@fsu.edu

Research Interest(s):

- Physiology
- Cardiovascular health
- Stress



Tanya Renn

Social Work
trenn@fsu.edu

Research Interest(s):

- Health
- Addiction
- Criminal Justice



Cesar Rodriquez

Biomedical Sciences
cesar.rodriquez@med.fsu.edu

Research Interest(s):

- Synthetic Biology
- Cell-based Diagnostics and Therapeutics
- Computer-aided Design and Engineering



Daniel Schwartz

Computer Science
schwartz@cs.fsu.edu

Research Interest(s):

- Artificial Intelligence
- Fuzzy Systems

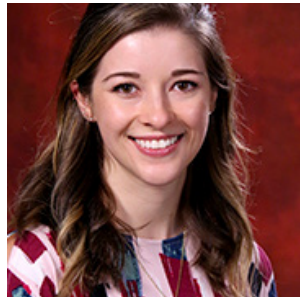


Julia Sheffler

Behavioral Sciences and Social Medicine
julia.sheffler@med.fsu.edu

Research Interest(s):

- Stress
- Aging and health
- Childhood adversity



Kourosh Shoele

Mechanical Engineering
kshoele@fsu.edu

Research Interest(s):

- Computational Mechanics
- Bio-inspired Engineering
- Renewable Energy



Theo Siegrist

Chemical and Biomedical Engineering
tsiegrist@fsu.edu

Research Interest(s):

- Materials Science
- Materials under extreme conditions
- Structure-property relationships



Geoffrey Strouse

Chemistry and Biochemistry
strouse@chem.fsu.edu

Research Interest(s):

- Magnetism
- Lighting
- Biomedical



Yanshuo Sun

Industrial and Manufacturing Engineering
y.sun@fsu.edu

Research Interest(s):

- Mathematical programming
- Microeconomics
- Transportation & mobility systems



Aavudai Anandhi Swamy

Civil and Environmental Engineering

anandhi@famu.edu

Research Interest(s):

- Environmental change is constant - access, adapt, mitigate



Meredith Thomas

Marketing

mthomas@business.fsu.edu

Research Interest(s):

- Community
- Urban planning
- Consumer well-being



Sana Tibi

Communication Science and Disorders

sana.tibi@cci.fsu.edu

Research Interest(s):

- Literacy
- Psychology
- Educational technology



Mehdi Vahab

Mechanical Engineering
mvahab@fsu.edu



Research Interest(s):

- Computational fluid dynamics
- Phase-change systems
- Fluid-structure interaction
- Multimaterial simulations

Jamie Valentine

Campus Sustainability
jvalentine@fsu.edu



Research Interest(s):

- Community engagement
- Sustainability
- Social justice

Hui Wang

Industrial and Manufacturing Engineering
hwang10@eng.famu.fsu.edu



Research Interest(s):

- Data fusion
- Internet-of-things
- Automation

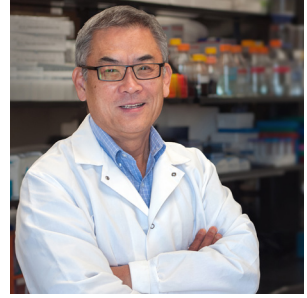
Zuoxin Wang

Psychology

zwang@psy.fsu.edu

Research Interest(s):

- Social behaviors
- Drugs of addiction
- Neurochemical mechanisms



Jessica Wendorf Muhamad

Communication

jwendorfmuhamad@fsu.edu

Research Interest(s):

- Participatory-based methods
- Hypervulnerable populations
- Systems thinking (experiential activities)



Frankie Wong

Nursing

fwong@fsu.edu

Research Interest(s):

- HIV/Sexually Transmitted Infections
- Sexual Health
- Migration and Health



Yan Xin

National High Magnetic Field Laboratory
xin@magnet.fsu.edu

Research Interest(s):

- Materials characterization at atomic scale
- Phase transition in-situ TEM study
- TEM



Peng Xiong

Physics
pxiong@fsu.edu

Research Interest(s):

- Novel superconductivity
- Spintronics
- Quantum computing

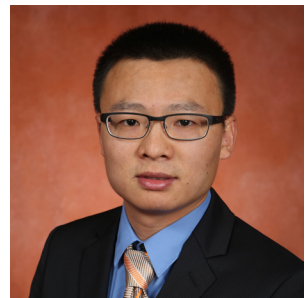


Zhibin Yu

Industrial and Manufacturing Engineering
zhbin.yu@fsu.edu

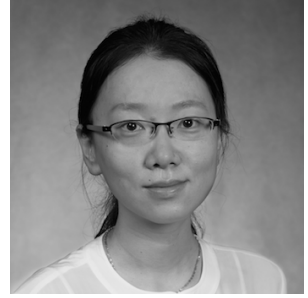
Research Interest(s):

- Composite materials
- Energy
- Defense



Qian Zhang

Educational Psychology and Learning Systems
qzhang4@fsu.edu



Research Interest(s):

- Longitudinal data analysis
- Multilevel modeling
- Mediation and moderation analysis
- Missing data problems

Lingjiong Zhu

Mathematics
zhu@math.fsu.edu



Research Interest(s):

- Applied probability
- Data science
- Financial engineering

Thanks to Our Sponsors



Assistance Provided By



Florida Resources
and Environmental
Analysis Center



Office of Proposal Development
OPD.FSU.EDU