



## Collaborative Collision Seed Fund

New this year, the Office of Proposal Development is pleased to announce the availability of competitive funding for project teams that form as a result of Collaborative Collision.

The Collaborative Collision seed fund provides up to \$25,000 to the most promising new team to form as a result of connections made at Collaborative Collision events. Collaborative Collision grants are intended to catalyze team development, and allow a new team to position themselves to seek external funding for a new research initiative by demonstrating a history of successful collaboration. Grant recipients are expected to work with the Office of Proposal Development to submit external funding proposals within one year of the conclusion of a Collaborative Collision award.

Applicant teams to the seed fund must have attended the corresponding Collaborative Collision, and must not have previously co-authored any grant proposals, or peer reviewed articles.

Full program details may be found at:

[research.fsu.edu/CollaborativeCollision](http://research.fsu.edu/CollaborativeCollision)



## Agenda

- 4:00 p.m. Check-In**
- 4:15 p.m. Welcome**  
Dr. Gary K. Ostrander  
*Vice President for Research*
- 4:30 p.m. Keynote Presentation**  
Steve Martin  
*Florida Division of Emergency Management*
- 5:00 p.m. Poster Session 1 (Garnet)**
- 5:20 p.m. Poster Session 2 (Gold)**
- 5:40 p.m. Poster Session 3 (Green)**
- 6:00 p.m. Reception**

# Participants

Participant posters with research profiles are available at:  
[research.fsu.edu/CollaborativeCollision](http://research.fsu.edu/CollaborativeCollision)

Neda Yaghoobian  
Mechanical Engineering  
Nyaghoobian@fsu.edu

Research Interests:

- Flow over complex terrains (e.g. trees, buildings, etc.)
- Fire-heat propagation in complex areas
- Land-atmosphere interaction
- Computational fluid dynamics



Ming Ye  
Earth, Ocean & Atmospheric Science  
mye@fsu.edu

Research Interests:

- Uncertainty analysis
- Environmental modeling
- Karst hydrology and geohazard



Tingting Zhao  
Geography  
tzhao@fsu.edu

Research Interests:

- Evacuation decision-making
- GIS



Kourosh Shoele  
Mechanical Engineering  
kshoele@eng.famu.fsu.edu



Research Interests:

- Computational Fluid Dynamics
- Multiscale Simulations
- Plant biomimetics

Yassir AbdelRazig  
Civil and Environmental Engineering  
abdelrazig@eng.famu.fsu.edu



Research Interests:

- Infrastructure Resilience
- High Performance Buildings
- Vulnerable Population Resilience

Yanshuo Sun  
Industrial and Manufacturing Engineering  
y.sun@fsu.edu



Research Interests:

- Optimization theory & applications
- Transportation systems analysis
- Data analytics & visualization

Tarek Abichou  
Civil and Environmental Engineering  
abichou@eng.famu.fsu.edu



Research Interests:

- Solid Waste/Storm Debris Management
- Coastal Erosion and Resiliency
- Geotechnical Engineering

Tian Tang  
Askew School of Public Administration and Policy  
ttang4@fsu.edu



Research Interests:

- Urban infrastructure resilience
- Smart city technologies
- Climate change mitigation and adaptation

Amy Ai  
College of Social Work  
aai@fsu.edu



Research Interests:

- Disaster and Trauma
- Positive Psychology and Media
- Resilience and Growth

Hui Wang  
Industrial and Manufacturing Engineering  
hwang10@fsu.edu



Research Interests:

- Cloud data fusion for inter-connected environment
- System informatics & optimization

Olugbenga "Moses" Anubi  
Electrical and Computer Engineering  
anubi@eng.famu.fsu.edu



Research Interests:

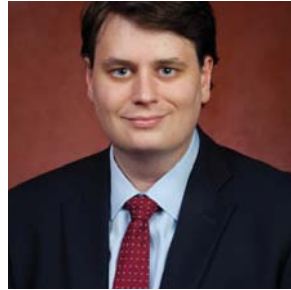
- Optimization
- Machine Learning
- Control Systems

**David Berlan**

Askew School of Public Administration and Policy  
dberlan@fsu.edu

Research Interests:

- Philanthropy
- Volunteerism
- Network Management

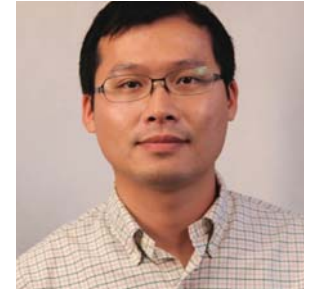


**Chiwoo Park**

Industrial and Manufacturing Engineering  
cpark5@fsu.edu

Research Interests:

- Data Science
- Image & Spatial Data Analysis
- Uncertainty Quantification



**Patricia Born**

Risk Management/Insurance, Real Estate & Legal Studies  
pborn@business.fsu.edu

Research Interests:

- Insurance Economics
- Catastrophic Risks
- Health Care and Health Insurance



**Scott Pickett**

Behavioral Sciences and Social Medicine  
scott.pickett@med.fsu.edu

Research Interests:

- Psychological trauma
- Emotion regulation
- Sleep disruption



**Mark Bourassa**

Center for Ocean Atmospheric Prediction Studies  
mbourassa@fsu.edu

Research Interests:

- Remote Sensing and In Situ Observations
- Variations in Winds & Precipitation
- Ocean and Atmosphere Coupling



**Ellen Piekalkiewicz**

Social Work  
epiekalkiewicz@fsu.edu

Research Interests:

- University and Community Partnerships
- Substance Abuse and Mental Health
- Impact of Disasters on Vulnerable Communities and Populations



**Kristina Buhrman**

Religion  
kbuhrman@fsu.edu

Research Interests:

- Environmental History (Disasters)
- Historical Memory
- History of Science and Religion

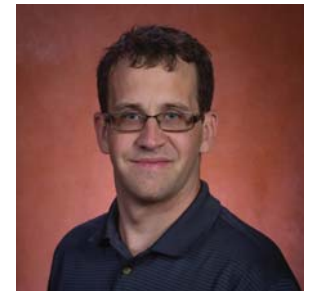


**Bryan Quaife**

Scientific Computing  
bquaife@fsu.edu

Research Interests:

- Fire dynamics
- Computational fluid dynamics
- Fast algorithms
- Complex geometries



### Jack Nicholson

Risk Management/Insurance, Real Estate & Legal Studies  
jnicholson@business.fsu.edu

#### Research Interests:

- Catastrophe Insurance
- Hurricane & Flood Modeling
- Catastrophe Risk Financing



### William Butler

Urban and Regional Planning  
wbutler@fsu.edu

#### Research Interests:

- Climate change and sea level rise planning
- Collaborative environmental management



### Paul Niell

Art History  
pniell@fsu.edu

#### Research Interests:

- Spanish Colonial Material Culture
- Colonial Spatiality
- Decolonial Theory



### Hongyuan Cao

Statistics  
hcao@fsu.edu

#### Research Interests:

- Big data analytics and machine learning
- Longitudinal data analysis
- Survival analysis



### Diogo Oliveira

School of Information  
diogo.oliveira@cci.fsu.edu

#### Research Interests:

- Cybersecurity
- Disaster Recovery
- Network Infrastructure



### Tim Chapin

Dean, College of Social Sciences and Public Policy  
tchapin@fsu.edu

#### Research Interests:

- Florida coastal communities
- Community resilience in Florida
- Florida local and regional land planning



### Eren Ozguven

Civil and Environmental Engineering  
eozguven@fsu.edu

#### Research Interests:

- Emergency Evacuations
- Infrastructure Resilience
- Smart Communities

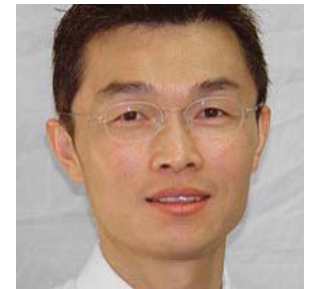


### Gang Chen

Civil and Environmental Engineering  
gchen@eng.famu.fsu.edu

#### Research Interests:

- Watershed modeling and management
- Land use change
- Climate change



## Juyeong Choi

Civil and Environmental Engineering  
jchoi@eng.famu.fsu.edu

### Research Interests:

- Infrastructure planning for sustainability and resilience
- Demolition planning
- System-of-systems



## Vasu Misra

Earth, Ocean & Atmospheric Science  
vmisra@fsu.edu

### Research Interests:

- Climate and weather extremes
- Climate modeling
- Sectoral applications of climate information



## Cassandra Cole

Risk Management/Insurance, Real Estate & Legal Studies  
ccole@business.fsu.edu

### Research Interests:

- Impact of disasters on insurers, communities, and consumers
- Disaster preparedness



## Jin Moon

Electrical and Computer Engineering  
j.moon@fsu.edu

### Research Interests:

- Power Electronics
- Energy Harvesting
- Wireless Power Transfer
- IoT, Sensor, Embedded System



## Kevin Curry

Department of Art  
kcurry@fsu.edu

### Research Interests:

- Reclamation of materials, personal artifacts/histories/memories from disasters
- Post-disaster shelter and communication
- Is "Geographic resiliency" a viable alternative to Sustainable retreat?



## Martin Munro

Modern Languages and Linguistics  
mmunro@fsu.edu

### Research Interests:

- Caribbean literature, art, and music
- Cultural responses to disaster
- Haiti



## James Elsner

Geography  
jelsner@fsu.edu

### Research Interests:

- Tornadoes
- Hurricanes

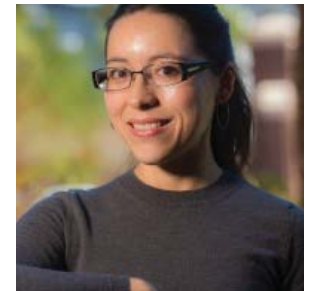


## Jeannine Murray-Román

Modern Languages and Linguistics  
jmurrayroman@fsu.edu

### Research Interests:

- Comparative Caribbean Literature
- Colonialism as disaster
- Post-María Puerto Rican literature & performance



Meredith Lynn  
Museum of Fine Arts  
mllynn@fsu.edu



Research Interests:

- Contemporary visual art
- Public art
- Community Development

Omar Faruque  
Electrical and Computer Engineering  
faruque@caps.fsu.edu



Research Interests:

- Modeling and simulation
- Renewable Energy Integration
- Energy Management

John Mathias  
Social Work  
jmathias@fsu.edu



Research Interests:

- Vulnerable populations and disasters
- Hurricanes
- Climate change

Richard Feiock  
Askew School of Public Administration and Policy  
Rfeiock@fsu.edu



Research Interests:

- Agency/Organization Collaboration in Disaster Response and Recovery
- Collaboration Network post disaster
- Sustainable Urban Infrastructure

Preston McClane  
Museum of Fine Arts  
pmclane@fsu.edu



Research Interests:

- Art & Cultural Heritage Law & Policy
- Environmental Art, Law, & Policy
- Museum Practice

Jessi Halligan  
Anthropology  
jhalligan@fsu.edu



Research Interests:

- Paleoenvironmental reconstruction and human response
- Sea level rise and archaeological site preservation
- Peopling of the Americas

Jayur Mehta  
Anthropology  
jmehta@fsu.edu



Research Interests:

- Climate change
- Archaeology
- Remote sensing

Julie Harrington  
Center for Economic Forecasting and Analysis  
jharrington@cefa.fsu.edu



Research Interests:

- Economic Modeling
- Risk Analysis
- Impact Analysis

Tisha Holmes  
Urban and Regional Planning  
ttholmes@fsu.edu



- Research Interests:
- Climate change adaptation
  - Disaster risk reduction
  - Community participation

Wenrui Huang  
Civil and Environmental Engineering  
whuang@eng.famu.fsu.edu



- Research Interests:
- Storm surge modeling
  - Food modeling
  - Wave actions on structures

Tracy Ippolito  
Center for Ocean Atmospheric Prediction Studies  
tipolito@fsu.edu



- Research Interests:
- Resiliency and adaptation (at the individual and community level)
  - Science and health communication
  - Experiential learning/interactive interventions

Minna Jia  
Institute of Science and Public Affairs  
mjia2@fsu.edu



- Research Interests:
- Public opinion
  - Policy evaluation
  - Data collection

Faye Jones  
School of Information  
faye.jones@cci.fsu.edu



- Research Interests:
- Community resiliency
  - Information technology (IT)
  - Disaster preparedness & response
  - Post-hurricane community impact and resilience

Charalambos Konstantinou  
Center for Advanced Power Systems  
konstantinou@caps.fsu.edu



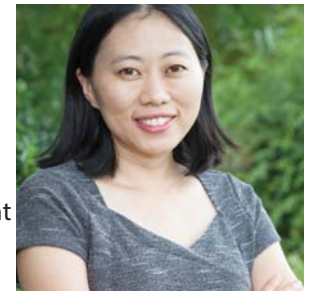
- Research Interests:
- Cybersecurity
  - Cyber-Physical Systems
  - Resilience and Control

Carla Laroche  
Law  
claroche@law.fsu.edu



- Research Interests:
- Mass incarceration/criminal justice reform
  - Gender justice and family law
  - Prison/jail conditions

Lichun Li  
Industrial and Manufacturing Engineering  
lichunli@eng.famu.fsu.edu



- Research Interests:
- Game Theory
  - Dynamic Programming and Reinforcement Learning
  - Control Theory