



Jeongbin Kim

College of Social Sciences and Public Policy
Economics

jkim33@fsu.edu

Expertise:

- Behavioral and experimental economics
- Patience
- Present bias

Research Experience / Interests in Mental & Behavioral Health

- How an individual's level of patience, evaluation of future outcomes, or inclination towards immediate gratification affects behavior

Potential Research Questions

- Are individuals with higher levels of patience more likely to opt for preventive healthcare measures due to their long-term benefits?
- Are individuals with higher levels of patience more inclined to undergo plastic surgeries, considering the potential long-term benefits?
- How does mental health influence patience? Do those with mental health issues tend to evaluate future outcomes more pessimistically?

Skills and resources I bring to the collaboration

- Experimental design
- Principles of economics
- Economic theories connecting mental and behavioral health with economic decisions (education, career selection, etc.)
- Strong communication skills

Skills and resources I'd like to find through collaboration

- Mental and behavioral health experts
- Access to patient populations
- Resources and manpower to conduct large-scale survey experiments with representative samples

Recent or Ongoing Projects to Highlight

The effects of time preferences on cooperation:
Experimental evidence from infinitely repeated games





Gashaye Tefera

College of Social Work

gtefera@fsu.edu

Expertise:

- Immigrant and refugee wellbeing
- Access to healthcare
- Health disparities

Research Experience / Interests in Mental & Behavioral Health

- Understanding the mental health impacts and experiences of the COVID-19 pandemic among disadvantaged groups, including immigrants, international students, older adults, and family caregivers
- Investigating barriers to mental and behavioral health services among immigrants and refugees and the development of culturally relevant interventions

Skills and resources I bring to the collaboration

- An international social work perspective
- Qualitative research skills
- Experience of working with diverse populations

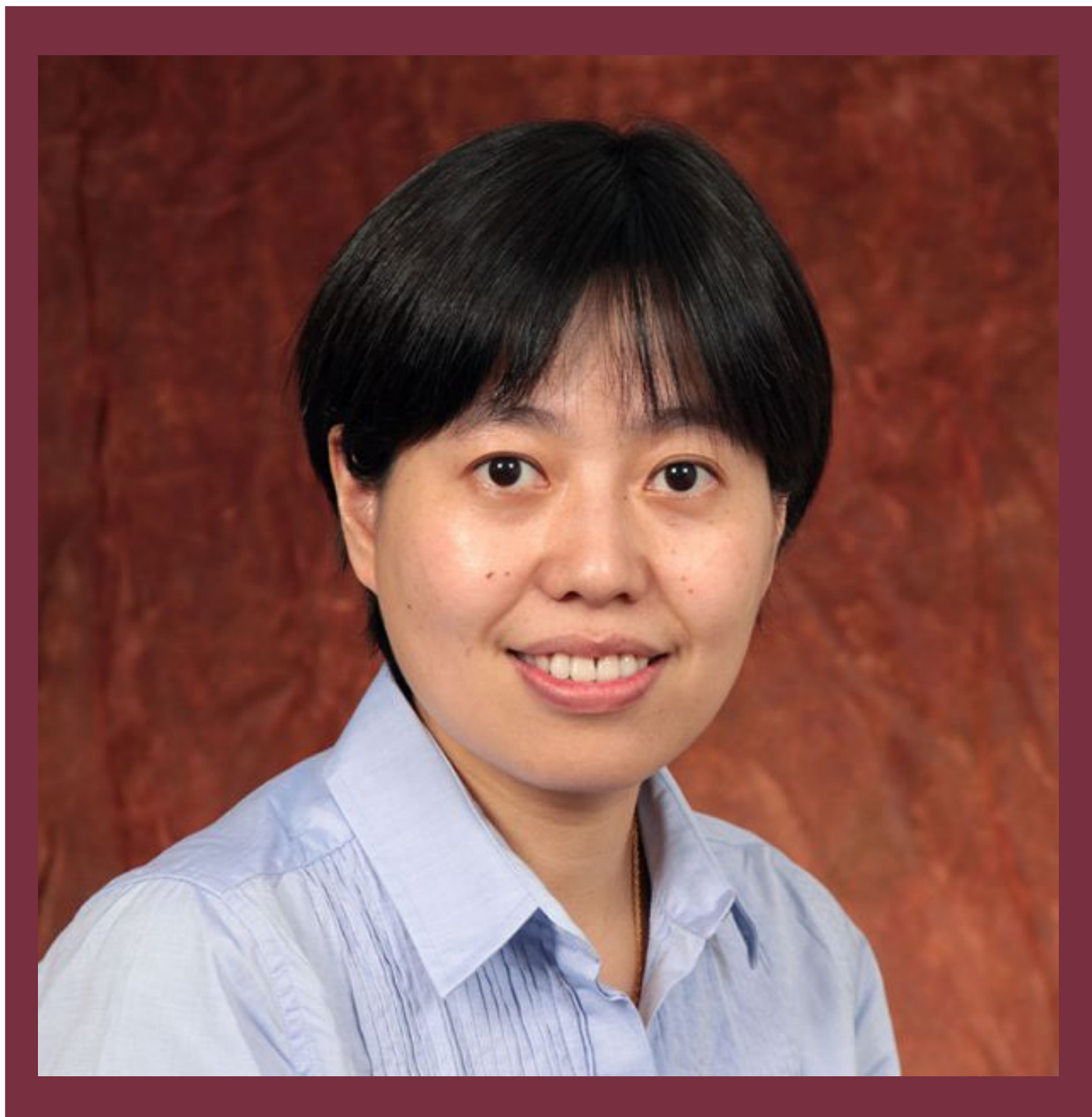
Skills and resources I'd like to find through collaboration

- Networking with researchers of similar interest in immigrants and refugee wellbeing
- Identifying centers at FSU and beyond that focus on access to healthcare or health disparities
- Collaborative grant writing

Recent or Ongoing Projects to Highlight

- Vulnerability And Resilience During a Natural Disaster: Exploring the Experiences of Foster Children in Florida
- Exploring Healthcare-Related Services of Refugee Resettlement and Support Organizations: Challenges and Implications for Policy and Practice
- Lack of trust in healthcare services among African immigrants in Florida: Exploring the impact, contributing factors, and potential solutions





Fengfeng Ke

College of Education, Health, and Human Sciences
Educational Psychology and Learning Systems

fke@fsu.edu

Expertise:

- Learning sciences
- Learning systems design
- AI in education

Research Experience / Interests in Mental & Behavioral Health

- Virtual reality-based simulation for promoting social and cognitive problem solving of children with autism
- Ecosystem of neurodiversity in rural regions
- AI-powered learning and professional development for neurodiverse workforce development

Skills and resources I bring to the collaboration

- Learning sciences
- Design and development of individualized learning systems
- Design and development of LLM-based AI in learning

Skills and resources I'd like to find through collaboration

- Content expertise in the domains of mental and behavioral health
- Prior experience in NIH proposal writing and/or funding

**COLLABORATIVE
COLLISION @FSU**





Ziqi Li

College of Social Sciences and Public Policy
Geography
ziqi.li@fsu.edu

Expertise:

- GIS
- Spatial analysis
- Machine learning

Research Experience / Interests in Mental & Behavioral Health

- Spatial-temporal analysis of Home Mortgage Disclosure Act (HMDA) data to revisit redlining, a practice that refers to denying access to mortgages based on where people live
- Impact of redlining on health behavior and its spatial inequalities

Skills and resources I bring to the collaboration

- Spatial analysis of health data
- Cartographic visualization
- Interpretable machine learning on large databases
- Geographical perspectives on health inequalities
- Mobile and web application developments

Skills and resources I'd like to find through collaboration

- Domain knowledge on mental and behavioral health
- Large health databases with geographic information

Recent or Ongoing Projects to Highlight

Multi-scale Geographically Weighted Regression
Interpretable machine learning/explainable AI
Spatial analysis of the social determinants of health





Xiaonan Zhang

College of Arts and Sciences

Computer Science

xzhang@cs.fsu.edu

Expertise:

- Wireless communication
- Security and privacy
- Edge computing

Research Experience / Interests in Mental & Behavioral Health

- Deployment of federated learning on edge computing system
- I aim to delve deeper into sophisticated federated learning and distributed computing methodologies
- Leveraging edge computing alongside artificial intelligence to create tailored, context-aware interventions for mental health
- Interventions would be deployed via mobile or wearable technology, offering real-time support that adjusts according to the individual's immediate circumstances and psychological state

Skills and resources I bring to the collaboration

- Complete codes for federal learning
- Wireless transceivers and embedded devices
- Dedicated Ph.D. students
- Writing
- Commitment of time

Skills and resources I'd like to find through collaboration

- Mental and Behavioral Health expertise
- Research gaps in Mental and Behavioral Health from the perspective of computing and privacy
- Potential paper collaboration
- Potential funding collaboration

Recent or Ongoing Projects to Highlight

Harmonious Federated Intelligence addresses the challenge of implementing efficient federated learning in edge computing systems with a hardware-software co-design framework, which enables the allocation of learning models and data to the most favorable edge devices for training without wasting or overly exploiting edge resources.





Angi Yoder Maina

Provost Office

Trauma and Resilience Collaborative

ayodermaina@fsu.edu

Expertise:

- Youth Mental Health
- Peer Support



Research Experience / Interests in Mental & Behavioral Health

- Exploration of mental and behavioral health issues, particularly focusing on youth mental health and the efficacy of peer support programs, especially within limited-resource environments
- Nuances of trauma and its impacts on both individuals and organizations, particularly within conflict-affected regions
- Investigating how trauma affects not only the individuals receiving services but also the practitioners and organizations providing support
- Healing-centered peacebuilding in conflict-affected countries

Skills and resources I bring to the collaboration

- Expertise in Conflict-Affected Environments
- Complex Systems Thinking
- Extensive Networks in East Africa
- Trauma-Informed Organizational Support Programs

Skills and resources I'd like to find through collaboration

- Data analysis expertise for interpreting complex datasets related to mental health, trauma, and organizational dynamics in conflict-affected environments
- Funding and grant writing support

Recent or Ongoing Projects to Highlight

As we launch the Trauma and Resilience Collaborative at FSU, my aim is to connect with faculty actively involved in trauma and resilience research and interventions across the university.

The Collaborative seeks to highlight the interdisciplinary research initiatives already underway on campus. Leading the initiative for FSU to become the first trauma-aware, informed, and responsive university in the US.



Nicole Ennis

College of Medicine
Behavioral Sciences and Social Medicine
Center for Translational Behavioral Science
nennis@fsu.edu

Expertise:

- Behavioral interventions
- Substance use
- Chronic disease

Research Experience / Interests in Mental & Behavioral Health

- Address the complex factors patients with chronic/life-limiting illness face by implementing solutions that improves patient care in real world settings
- Many effective behavioral interventions that improve clinical practice do not translate into meaningful outcomes that improve patient care
- Dissemination and implementation science framework
- My program of research identifies, implements, evaluates, and adapts evidence based behavioral interventions in the context of learning healthcare systems

Skills and resources I bring to the collaboration

- Strong grant writing skills
- Communication skills
- Effective project and team management
- Preliminary data in both medical marijuana and HIV

Skills and resources I'd like to find through collaboration

- Quantitative analysis
- Statistical skills
- Data management

Recent or Ongoing Projects to Highlight

Fostering Institutional Resources for Science Transformation: The FLORIDA-FIRST Health-science Brigade
Novel Extensions of Alcohol Contingency Management in PLWH
Addressing Alcohol Use Among Youth Living with HIV-Community Engagement Core





Weikuan Yu

College of Arts and Sciences

Computer Science

wyu3@fsu.edu

Expertise:

- Data management
- High-performance computing
- Data analysis

Research Experience / Interests in Mental & Behavioral Health

- Accurate classification of depression through optimized machine learning models on high-dimensional noisy data

Skills and resources I bring to the collaboration

- High-performance computing
- Data management for resilience and efficiency
- Data analysis via machine learning for neural networks

Skills and resources I'd like to find through collaboration

- Scientific problems that need to process large amounts of data through numerical or machine learning algorithms

Recent or Ongoing Projects to Highlight

We are developing an interdisciplinary data depot for efficient management and analysis of MagLab datasets





James Du

College of Education, Health, and Human Sciences
Sports Management | cSHED

jdu3@fsu.edu

Expertise:

- Active leisure and population health
- Sport management and public health
- Connected fitness

Research Experience / Interests in Mental & Behavioral Health

- Interdisciplinary studies between sport management and public health, emphasizing the transformative power of sports
- How sports can serve as a socioeconomic catalyst, influencing physical, social, and psychological well-being outcomes, both eudaemonic and hedonic, among individuals and communities

Skills and resources I bring to the collaboration

- Transformative sport service framework
- Quantitative analysis of individual and population health
- Interactive data visualization

Skills and resources I'd like to find through collaboration

- Evidence-based interventional study design and implementation
- Experiences in leading, contributing to, and participating in research projects funded by the National Institutes of Health (NIH)

Recent or Ongoing Projects to Highlight

Investigating the Impact of Telehealth in the Metaverse on Mental and Behavioral Health Outcomes for Student-Athletes in the Name, Image, and Likeness Era





Te-Yen Wu

College of Arts and Sciences

Computer Science

twu@cs.fsu.edu

Expertise:

- HCI
- AI
- Sensing

Research Experience / Interests in Mental & Behavioral Health

- Using wearable sensor data to model individuals' mental and behavioral health to increase societal well-being
- Using an AI-generated realistic avatar to facilitate private and trustworthy consultation, improving an individual's mental and behavioral health

Skills and resources I bring to the collaboration

- Mobile Sensing
- Wearable Sensing
- AI-generated Avatar
- Machine Learning

Skills and resources I'd like to find through collaboration

- Statistical Experts
- Clinical Psychology

**COLLABORATIVE
COLLISION @FSU**





Keller Sheppard

College of Crimonology and Criminal Justice

ksheppard@fsu.edu

Expertise:

- Juvenile
- Justice
- Policing

Research Experience / Interests in Mental & Behavioral Health

- Trauma-informed care (TIC) within juvenile justice residential commitment facilities
- Working closely with the Florida Department of Juvenile Justice, I examined the implementation and effectiveness of TIC practices
- Subsequent research then examined how TIC impacted staff and youth outcomes
- TIC in contexts beyond residential facilities (e.g., community-based juvenile justice services and law enforcement agencies)
- Striving to foster environments that prioritize healing and rehabilitation for individuals affected by trauma

Skills and resources I bring to the collaboration

- Quantitative research methods
- Strong collaborative relationship with the Florida Department of Juvenile Justice
- Research experience in applying trauma-informed care in human service agencies

Skills and resources I'd like to find through collaboration

- Collaborative relationships with human service organizations, especially law enforcement
- Experience researching mental health and wellness in human service organization

Recent or Ongoing Projects to Highlight

Working upstream: A statewide analysis of individual and contextual risk factors for future juvenile justice involvement among youth receiving prevention services.
Reducing staff burnout and turnover intentions in juvenile justice residential commitment programs: The promise of trauma-informed care.





Hailey Kuang

College of Education, Health, and Human Sciences

hkuang2@fsu.edu

Expertise:

- Psychological Measurement
- Computational Psychometrics
- Item Response Theory

Research Experience / Interests in Mental & Behavioral Health

- Current research integrates psychological theories with data-driven approaches to validate and enhance mental and behavioral health measures
- Future research focuses on leveraging multimodal data, including neuroimaging, physiological markers, and digital behavior, to predict mental health outcomes
- Employing advanced statistical and machine learning models
- Identifying biomarkers, behavioral patterns, and psychosocial factors contributing to mental health disorders

Skills and resources I bring to the collaboration

- Measurement and Statistics
- Machine Learning (ML)
- Interdisciplinary Perspective
- High-Performance Computing Resources
- Collaboration with Various Disciplines

Skills and resources I'd like to find through collaboration

- Access to Large-Scale Datasets related to mental and behavioral health
- Clinical expertise in mental health and insights into the practical implications of research findings, ensuring that the developed measures and predictive models are clinically relevant and applicable in real-world settings

Recent or Ongoing Projects to Highlight

Using deep neural networks to analyze response process data from online assessments, aiming to deepen understanding of learners' behavioral, sociocultural, and linguistic traits, thus, improving instructional practices, assisting in enhancing student achievement, and informing operational decisions





Zhe He

College of Communication and Information
School of Information

Institute for Successful Longevity

zhe@fsu.edu

Expertise:

- Health Informatics
- Artificial Intelligence
- Natural Language Processing

Research Experience / Interests in Mental & Behavioral Health

- Team Lead of Biostatistics, Informatics, and Research Design (BIRD) Program in the UF-FSU Clinical and Translational Science Award
- Biomedical and health informatics with expertise including machine learning, natural language processing, knowledge representation, and big data analytics
- Improving population health and advancing biomedical research through the collection, analysis, and application of electronic health data from heterogeneous sources

Skills and resources I bring to the collaboration

- Health informatics methods
- Design and development of eHealth interventions
- Access to EHR data
- AI techniques on machine learning and natural language processing
- Grant writing and interdisciplinary research track record

Skills and resources I'd like to find through collaboration

- Design of eHealth interventions
- Behavioral clinical trials
- Access to mental health and behavioral health data
- Access to clinicians and physicians

Recent or Ongoing Projects to Highlight

- LabGenie: A Patient-Engagement Tool to Aid Older Adults' Understanding of Lab Test Results
- DeepCare: Artificial Intelligence & Quality of Life in Older Adults at Risk of Alzheimer's Disease and Related Dementias
- SHARE Program: Innovations in Translational Behavioral Science to Improve Self-management of HIV and Alcohol Reaching Emerging Adults
- The Adherence Promotion with Person-centered Technology (APPT) Project



Gina Sutin

College of Medicine

Behavioral Sciences and Social Medicine

angelina.sutin@med.fsu.edu

Expertise:

- Cognitive aging / dementia risk
- Purpose in life
- Personality

Research Experience / Interests in Mental & Behavioral Health

- How psychological factors, particularly personality traits and purpose in life, contribute to cognitive aging and risk of dementia and the mechanisms (including mental and behavioral health factors) that explain these associations
- Affective and behavioral factors measured in daily life to better understand the everyday mechanisms that support (or harm) cognitive health
- How environmental factors shape the development of psychological functioning across adulthood

Skills and resources I bring to the collaboration

- Purpose in life and other aspects of well-being
- Public databases with measures of mental and behavioral health
- Ecological momentary assessment
- NIH grant writing and management

Skills and resources I'd like to find through collaboration

- GIS and use of contextual data from public resources (e.g., Census, EPA)
- Knowledge of sensors, both measurement and analysis
- Different disciplinary perspectives on cognitive health in aging

Recent or Ongoing Projects to Highlight

- Purpose in life: Mechanisms to support healthier cognitive aging and reduce risk of Alzheimer's disease
- A mechanistic and dyadic approach to identify how interpersonal conscientiousness supports cognitive health and lowers risk of dementia
- Prenatal and early life antecedents of personality





Flor del Cielo Hernandez

College of Music

Music Therapy

fhernandez2@fsu.edu

Expertise:

- Inpatient
- Outpatient
- Community

Research Experience / Interests in Mental & Behavioral Health

- Future research interests include community mental health, with community members who are not experiencing a crisis but need to maintain a low level of care and treatment
- Specific music therapy interventions and music therapy combined with other modalities to provide psychoeducation and decrease stigma and discrimination
- Social and cultural factors influencing someone's access to and receipt of care
- Increasing the quality of care in inpatient settings, family-oriented music therapy, and eating disorders

Skills and resources I bring to the collaboration

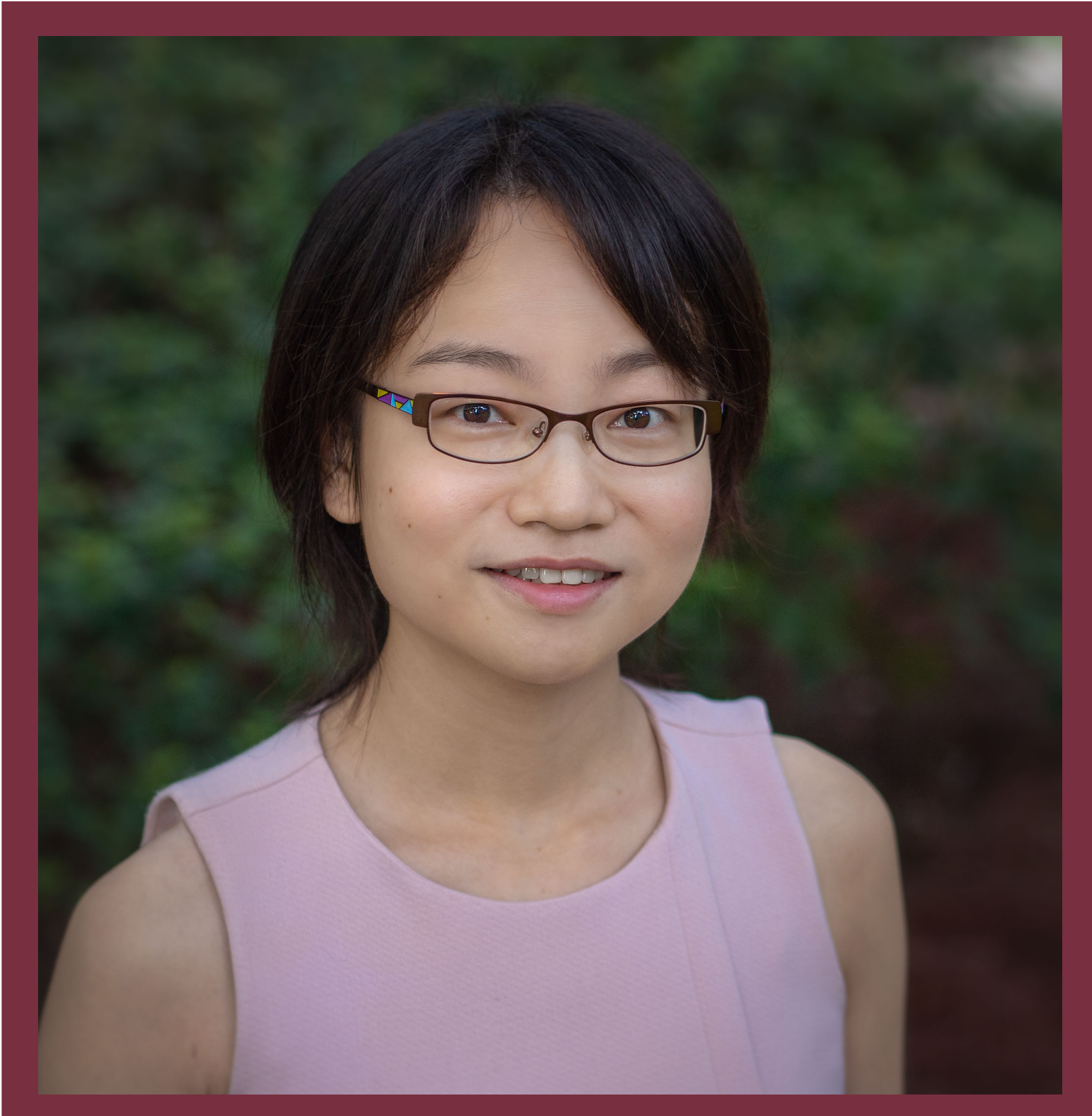
- Experience providing services and being a part of a team in inpatient and outpatient settings
- Music therapy and related disciplines
- Interventions and systems

Skills and resources I'd like to find through collaboration

- Multidisciplinary research collaborators

**COLLABORATIVE
COLLISION @FSU**





Qiong Wu

College of Education, Health, and Human Sciences
Human Development and Family Science
qwu3@fsu.edu

Expertise:

- Developmental psychopathology
- Marriage and Family Therapy
- Quantitative research methodology

Research Experience / Interests in Mental & Behavioral Health

- Emotional processes within the family and their role in the intergenerational transmission of psychopathologies from parents to children
- How maternal mental health problems (depression, anxiety, and substance use) are associated with adjustment issues in children through mother-child emotional dynamics
- As an applied researcher and clinician, I am also interested in examining the efficacy of family therapy interventions aimed at improving parent-child emotional interactions

Skills and resources I bring to the collaboration

- Child development, parenting, and developmental psychopathology
- Statistical modeling
- Clinical experiences with families and children
- Consulting

Skills and resources I'd like to find through collaboration

- Grant writing
- Connection to local clinical populations

Recent or Ongoing Projects to Highlight

- Understanding children's self-regulation development in low-income families
- Understanding the transmission process of maternal depression to her children
- Clinical research in family therapy





John Moore

College of Social Work

jmoore6@fsu.edu

Expertise:

- Substance use
- Dual diagnoses
- Behavior change



Research Experience / Interests in Mental & Behavioral Health

- Identifying and incorporating critical determinants of substance use behavior change into interventions to better promote the recovery and well-being of those impacted by substance misuse
- Investigating substance use behavior change among persons with comorbid severe mental illness
- Substance use among criminal justice-involved and rural populations
- Epidemiological studies, clinical trial interventions, implementation science, and community-informed research approaches

Skills and resources I bring to the collaboration

- Statistical Analysis
- Secondary Data Analysis
- Substance Use and Substance Use Behavior Change
- Project Management
- Interdisciplinary Research

Skills and resources I'd like to find through collaboration

- Local Mental and Behavioral Health Providers
- Healthcare Systems Data
- Intervention Development and Implementation
- Innovative Research Methods
- Primary Data Collection Best Practices

Recent or Ongoing Projects to Highlight

- Polysubstance use behavior change among adults with Schizophrenia who smoke
- Disparities in medication assisted treatment access and outcomes among persons with comorbid opioid misuse and severe mental illness
- Perceived substance use severity among persons with substance use disorders and comorbid mental disorders
- Medication assisted treatment for opioid misuse



Chao Huang

College of Arts and Sciences
Statistics

chuang7@fsu.edu

Expertise:

- Mental health & aging
- Biostatistics
- Brain image data analysis

Research Experience / Interests in Mental & Behavioral Health

Research experience:

1. Large-scale imaging studies in mental health & aging (ADNI, HCP)
2. Imaging genetics: using imaging and genetic data to explore the relationship among gene, brain, and human cognition

Future research interests:

1. Causal inference in mental health & aging studies using brain imaging, clinical, and genetic data
2. The COVID-19 effect on mental health

Skills and resources I bring to the collaboration

- Biostatistics
- Brain image data analysis
- Genetic data analysis
- Statistical consulting

Skills and resources I'd like to find through collaboration

- Grant funding contribution
- Unique dataset and scientific questions related to mental health and aging

Recent or Ongoing Projects to Highlight

- Shape Regression and Its Applications in Heterogeneous Medical Image Data
- Statistical Harmonization Methods in Integrating Large-scale Imaging Studies
- Identification and Evaluation of Subgroups in Alzheimer's Disease and Related Dementias Using Longitudinal Multimodal Image Data





Colm Connolly

College of Medicine

Magnetic Resonance Imaging (MRI) Facility

cconnolly@fsu.edu

Expertise:

- MRI
- Mood disorders
- Substance abuse

Research Experience / Interests in Mental & Behavioral Health

- Variety of psychiatric disorders including substance abuse, schizophrenia, and mood disorders using functional magnetic resonance imaging (fMRI)
- Skills in the design of fMRI tasks, deep familiarity with data analysis and neuroimaging software, and ability to write available software to meet needs
- Firm understanding of experimental methods, design, and statistical analysis
- Interpretation of imaging results
- Computer science, computational cognitive neuroscience, and fMRI analysis approaches to study substance use, HIV-infection and adolescent major depressive disorder, and grief in caregivers

Skills and resources I bring to the collaboration

- Functional / structural MRI
- Cognitive control
- Mood disorders
- Substance abuse
- Cognitive neuroscience

Skills and resources I'd like to find through collaboration

- Connecting with other individuals at FSU who are interested in using MRI to investigate the neuroscience of human function and dysfunction

**COLLABORATIVE
COLLISION @FSU**





Gregg Stanwood

College of Medicine
Biomedical Sciences
Bioecological Center for Rural Children's Health
gregg.stanwood@med.fsu.edu

Expertise:

- Neuroscience
- Pharmacology
- Toxicology

Research Experience / Interests in Mental & Behavioral Health

- Developmental influences of neurochemicals on brain structure and function, and how genetic and environmental factors dysregulate neurodevelopment and contribute to later mental health and neurological disorders
- Mechanism-based studies, using pharmacological, molecular, cell biological, and neuroanatomical methods to characterize models of brain dysfunction
- Human studies focus on the effects of pesticides on neurological development and health disparities in rural populations
- Mindfulness and cognitive therapies on brain biomarkers (e.g., stress hormones and inflammatory mediators)

Skills and resources I bring to the collaboration

- Basic science: cell and animal models, neuroanatomy, gene expression profiling, behavioral neuroscience
- Translational science: biomarkers (saliva, blood, urine, sweat), neurobehavioral development

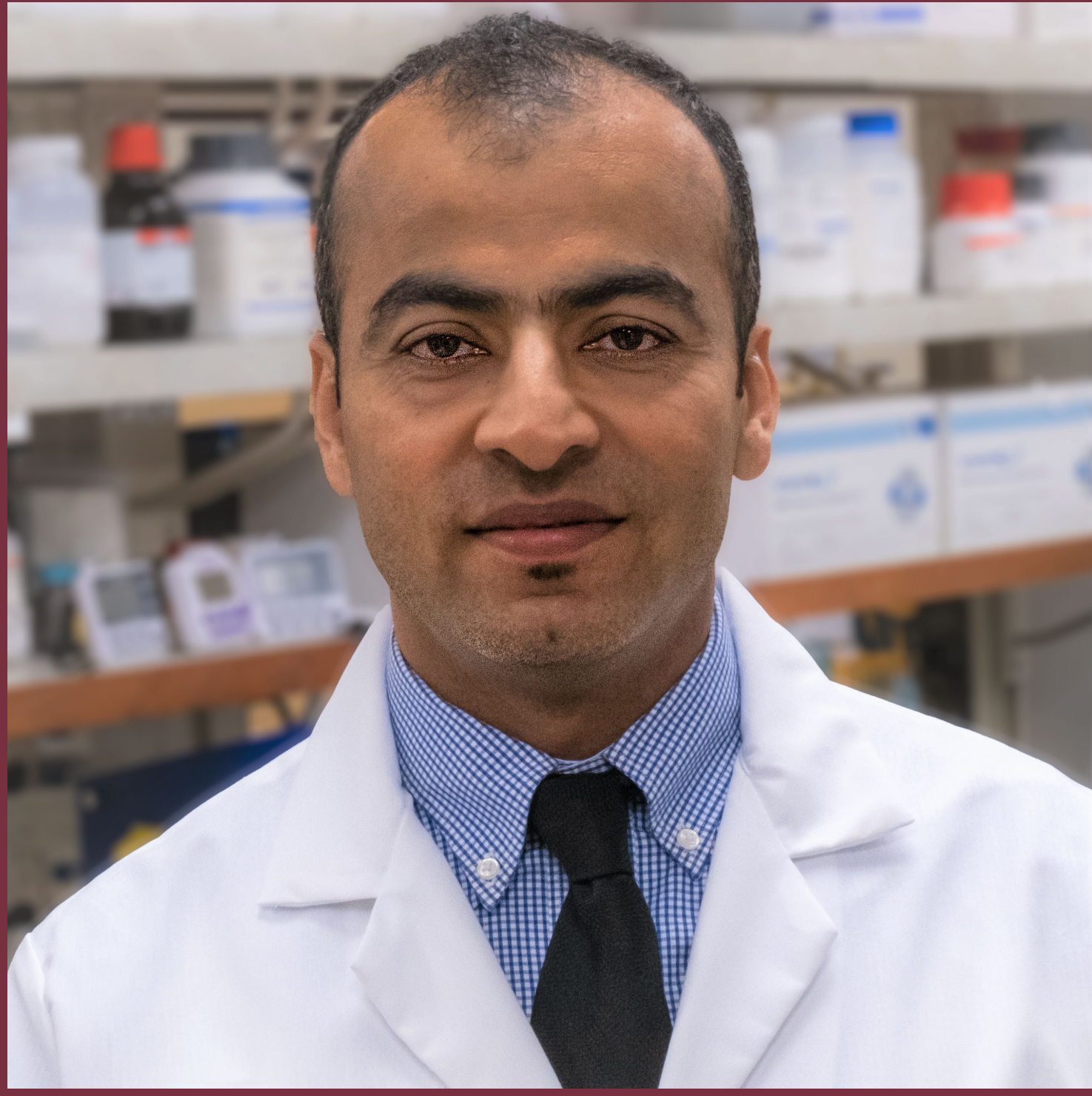
Skills and resources I'd like to find through collaboration

- Collaborators with expertise in creative and interdisciplinary approaches and a sincere interest in team science

Recent or Ongoing Projects to Highlight

- Bioecological Center for Rural Children's Health (BeRCH): Identifying and mitigating the interactive cumulative health consequences of chemical and non-chemical stressors
- Noninvasive Pesticide Biomonitoring Using Sweat Patches
- Dopaminergic Modulation of Brain Development





Ravi Nagpal

College of Education, Health, and Human Sciences
Health, Nutrition, and Food Sciences
rnagpal@fsu.edu

Expertise:

- Microbiome
- Gut health
- Gut-brain axis

Research Experience / Interests in Mental & Behavioral Health

- Discovering key gut microbiome signatures that are associated with aging-associated neurocognitive impairment including Alzheimer's disease and related dementias in preclinical and clinical settings
- Understand the role of specific beneficial versus infectious microbes in the brain health via the gut-brain axis and to develop nutritional strategies (e.g., probiotics, prebiotics) to foster a healthier microbiome and gut-brain health

Skills and resources I bring to the collaboration

- Microbiome
- Gut Microbiology
- Metagenomics
- Nutrition

Skills and resources I'd like to find through collaboration

- Clinical cohort access
- Specimen biobank
- Behavioral dataset
- Mental health expertise

**COLLABORATIVE
COLLISION @FSU**





Zhenghao Zhang

College of Arts & Sciences

Computer Science

zzhang@cs.fsu.edu

Expertise:

- Sensors
- Human activity detection
- Wireless networks

Research Experience / Interests in Mental & Behavioral Health

- Designed MultiSense, which is a wearable-free sensor system that can assist and help seniors living alone
- MultiSense uses multiple sensors, and can detect events in the home, such as human falls, walking steps, as well as monitor home appliances, such as the kitchen stove, to determine if they are turned on
- MultiSense consists of a sensor front-end, a processing back-end in the cloud, and a mobile phone app

Skills and resources I bring to the collaboration

- Sensor system design
- Human activity detection
- Home monitoring
- Algorithm design
- Wireless networking

Skills and resources I'd like to find through collaboration

- Healthcare researchers who can provide information about patients such as the kinds of human activities or behaviors which are most important to monitor
- Opportunities for pilot testing in-home detection

**COLLABORATIVE
COLLISION @FSU**





Joshua Loyal

College of Arts & Sciences

Statistics

jdl22h@fsu.edu

Expertise:

- Statistical network analysis
- Bayesian analysis
- Computational statistics

Research Experience / Interests in Mental & Behavioral Health

- Statistical analysis and modeling of complex network data, including studies involving multiple network observations and longitudinal (time-varying) networks
- Applications in social network analysis, the analysis of neurological disorders and brain networks, mental health, public health, and infectious diseases
- Developing general methodology for network data, which is often used to answer scientific questions in mental and behavioral health
- Looking to form collaborations at FSU to help mental health researchers draw better statistical inferences from their data

Skills and resources I bring to the collaboration

- Statistical network analysis
- Statistical computing
- Bayesian analysis
- Longitudinal data analysis
- Hypothesis testing

Skills and resources I'd like to find through collaboration

- Looking to form collaborations with researchers in mental and behavioral health to assist in the development of appropriate statistical methods to analyze data

Recent or Ongoing Projects to Highlight

- Robust Bayesian inference from noisy network data
- A latent space model for inferring distance dependent reciprocity in directed networks
- Fast variational inference of latent space models for dynamic networks using Bayesian P-splines
- A Bayesian nonparametric latent space approach to modeling evolving communities in dynamic networks





Ulla Bunz

College of Communication and Information
School of Communication
ubunz@fsu.edu

Expertise:

- Subjective well-being
- Social media
- Personality

Research Experience / Interests in Mental & Behavioral Health

- Effects on gaming on older adults' well-being
- Interplay between personality and social media use on subjective well-being
- Effect of internet-type technology in health contexts
- 20 years of experience in internet use (web, gaming, social media, and related technologies) research
- Interested in any health-related situation in which humans are interacting with technology in some way

Skills and resources I bring to the collaboration

- Survey research
- Statistical analysis
- Scale development
- Internet / technology use measures

Skills and resources I'd like to find through collaboration

- Management of projects with multiple areas of responsibility
- Access to new participant pools
- Forming ties with colleagues around the university

Recent or Ongoing Projects to Highlight

- Investigating health literacy, specifically maternal health in rural Florida
- Investigating the relationship between social media use, Big Five personality, and well-being





Christopher Uejio

College of Social Sciences and Public Policy
Geography
cuejio@fsu.edu

Expertise:

- Climate
- Health
- Equity

Research Experience / Interests in Mental & Behavioral Health

- My team has recently started working on post-disaster behavioral health
- We recently submitted an NIH P20 center grant to work on this topic

Skills and resources I bring to the collaboration

- Climate change foundation knowledge
- Environmental health study designs
- Geographic information systems (GIS)

Skills and resources I'd like to find through collaboration

- Expertise in adverse childhood experiences (ACES)
- Knowledge of existing courts or longitudinal health dataset sets

Recent or Ongoing Projects to Highlight

- CDC Building Resilience Against Climate Effects (BRACE)
- EPA Children's Environmental Health Center
- National Academy of Science Gulf Research Program





Xiuwen Liu

College of Arts & Sciences
Computer Science
Center for Security and Assurance in IT
xliu@fsu.edu

Expertise:

- Deep learning
- Computer vision
- Cybersecurity

Research Experience / Interests in Mental & Behavioral Health

- Creating robust intelligent systems and solutions by understanding vulnerabilities of the state-of-the-art artificial intelligent models and incorporating knowledge into the model via knowledge bases
- Developing safe and interpretable AI solutions by integrating learning (provided by machine learning models) to overcome the fundamental issue related to models produced by end-to-end training (as most deep learning models are)
- Developing efficient learning algorithms and representations

Skills and resources I bring to the collaboration

- Practical machine learning and deep learning solutions
- Knowledge-augmented deep learning models
- Access to GPU machines

Skills and resources I'd like to find through collaboration

- Challenges where AI will have significant impacts
- Projects needing trustworthy AI models
- Projects with image analyses
- Human applications of models
- NIH funding opportunities

Recent or Ongoing Projects to Highlight

AI-Powered Safe and Robust Human-Centered Platforms for Education and Research with College of Medicine and College of Nursing

Developing AI-powered platforms with human centered interfaces to explore the most effective and safe options to leverage large language models and minimize the risks and negative impacts





Shayok Chakraborty

College of Arts & Sciences
Computer Science
Institute for Successful Longevity
shayok@cs.fsu.edu

Expertise:

- Machine learning
- Computer vision
- AI for health

Research Experience / Interests in Mental & Behavioral Health

- Exploring the possibilities for AI in the domain of mental health research

Skills and resources I bring to the collaboration

- Data / image analysis
- Predictive modeling using deep learning
- Predictive modeling under weak human supervision (insufficient annotated data)
- AI for collaborative proposals and publications

Skills and resources I'd like to find through collaboration

- Interesting research problems (particularly in mental health) necessitating data analysis and AI

Recent or Ongoing Projects to Highlight

- NSF CAREER project to develop novel active learning algorithms under real-world constraints
- Psychology department collaborations with a goal to develop AI techniques to predict adherence to cognitive training interventions in older adults





Joseph Gabriel

College of Medicine | College of Arts & Sciences
Behavioral Sciences & Social Medicine | History
joseph.gabriel@med.fsu.edu

Expertise:

- History
- Qualitative methods
- Health humanities

Research Experience / Interests in Mental & Behavioral Health

- Social and legal determinants of health
- Biomedical forms of knowledge
- Individual experience of debility and behavioral health problems
- History of pharmaceuticals, the pharmaceutical industry, and legal issues related to drug regulation
- History of clinical trials, bioethics, and evidence-based medicine
- Current and future work: cultural history of addiction, stigma, licit and illicit drug use, treatment adherence, translation efforts between alternative epistemologies and biomedical frameworks

Skills and resources I bring to the collaboration

- Historical analysis / scholarship
- Legal scholarship
- Cultural analysis
- Bioethical analysis
- Health humanities

Skills and resources I'd like to find through collaboration

- Pharmacoepidemiology

Recent or Ongoing Projects to Highlight

Florida State University Health Humanities Initiative





Kevin Johnson

College of Medicine
Behavioral Sciences and Social Medicine
FSU Neuromodulation
kjohnson21@fsu.edu

Expertise:

- Devices
- Depression
- Pain

Research Experience / Interests in Mental & Behavioral Health

- Translation of neuroscience and behavioral research into useful therapies
- Non-invasive brain stimulation, neuroimaging, sensory testing, and consumer health technology with applications to mood disorders and pain

Skills and resources I bring to the collaboration

- Industry device product development
- Clinical trial management
- Neuromodulation methods
- Neuroimaging (MRI)
- Sensory and perception testing

Skills and resources I'd like to find through collaboration

- Novel approaches or emerging technologies (e.g., digital, AI, biomarkers, sensory interventions)
- Populations with depression, anxiety, PTSD, and/or chronic pain
- Expertise in unique brain-based conditions
- Translational researchers

Recent or Ongoing Projects to Highlight

- Virtual reality, mindfulness, and accelerated transcranial magnetic stimulation
- Combining music therapy and transcranial magnetic stimulation
- Characterizing pain processing in patients with depression





Jian Feng

College of Arts and Sciences
Biological Science | Program in Neuroscience
feng@bio.fsu.edu

Expertise:

- Addiction
- Epigenetics
- Rodent studies

Research Experience / Interests in Mental & Behavioral Health

- My lab is interested in the epigenetic underpinnings of addiction through an interdisciplinary approach that integrates rodent behavioral models, genomics/epigenomics, and bioinformatics

Skills and resources I bring to the collaboration

- Mouse models of drug addiction
- Genomics
- Epigenomics
- Bioinformatics

Skills and resources I'd like to find through collaboration

- Bioinformatics
- Experience with human samples
- Human data on addiction

Recent or Ongoing Projects to Highlight

- Neuron subtype specific role of DNA methylation in cocaine addiction
- Higher order genome organization in addiction
- Implication of DNA methylation in alcohol use disorder susceptibility





Jesse Cogle

College of Arts and Sciences

Psychology

cogle@psy.fsu.edu

Expertise:

- Anxiety Disorders
- Treatment
- Digital Mental Health

Research Experience / Interests in Mental & Behavioral Health

- Anxiety and related disorders
- Developing digital mental health interventions for these conditions

Skills and resources I bring to the collaboration

- Expertise in mental health and its treatment

Skills and resources I'd like to find through collaboration

- Collaboration with researchers who work with elderly populations or those with chronic health conditions that are also impacted by mental health problems
- Develop collaborations with others who are conducting research with populations likely to benefit from the interventions my lab has been developing – interventions focused on social anxiety and body image disturbance, in particular

Recent or Ongoing Projects to Highlight

We've been developing and testing brief interventions for social anxiety, worry, and body dissatisfaction





Julia Sheffler

College of Medicine

Behavioral Sciences and Social Medicine

Center for Translational Behavioral Science

julia.sheffler@med.fsu.edu

Expertise:

- Dementia
- Psychology
- Interventions

Research Experience / Interests in Mental & Behavioral Health

- Integrative Science for Healthy Aging Lab
- Development and assessment of behavioral interventions for physical, mental, and neurocognitive health in older adults
- Interaction of biological, psychological, and social lifespan processes that influence functioning in older age
- Psychological and behavioral approaches to improve adherence and long-term success of health behavior interventions for older adults
- Basic social science approaches

Skills and resources I bring to the collaboration

- Licensed clinical psychologist
- Mental health diagnosis and treatment
- Geropsychology, older adults, and neurocognitive disorders
- Clinical trials and interventions

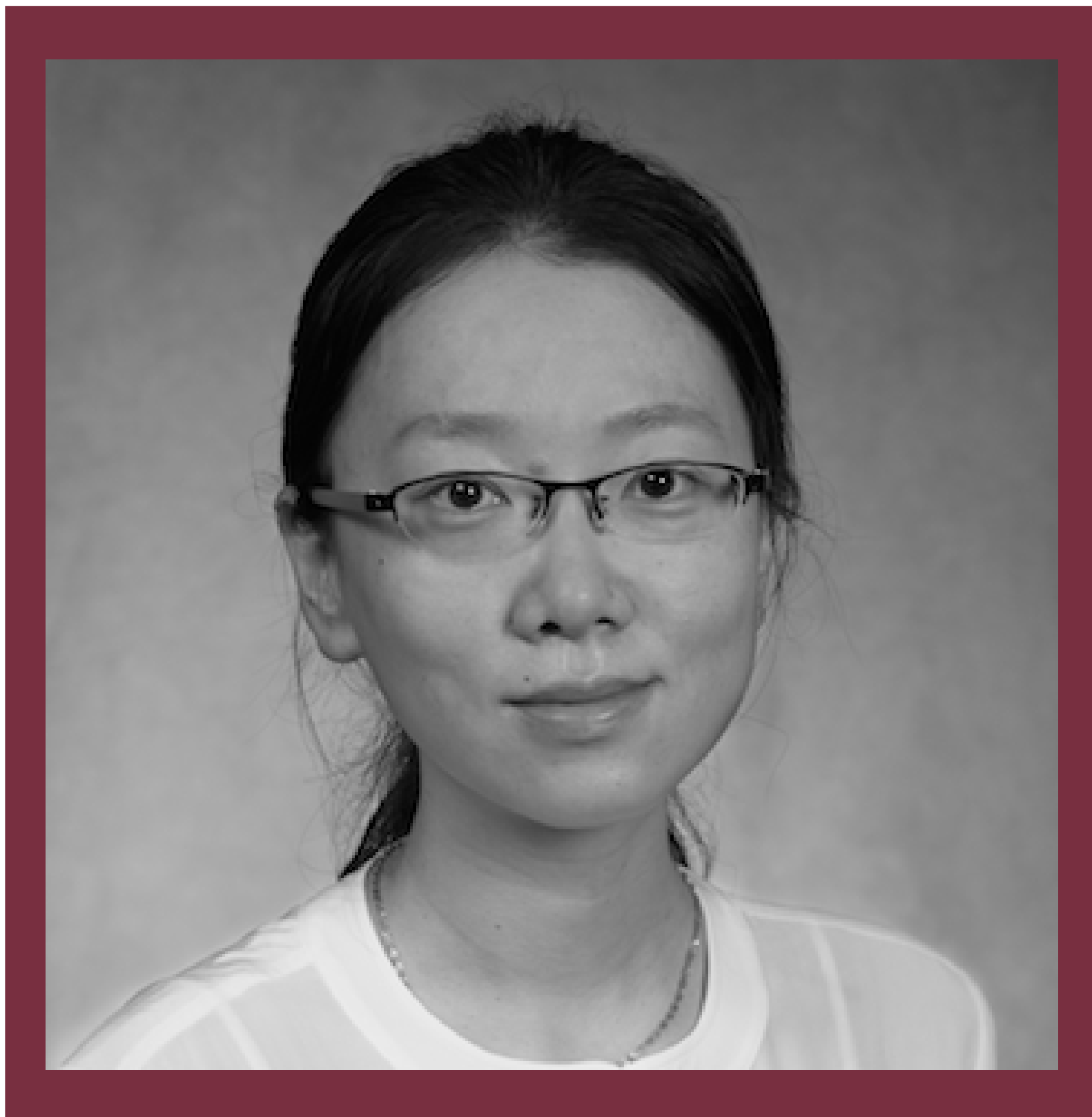
Skills and resources I'd like to find through collaboration

- Lifestyle interventions for chronic conditions
- Psychological factors that influence adherence
- Long-term behavior change

Recent or Ongoing Projects to Highlight

A Scalable Mediterranean-Ketogenic Nutrition Intervention to Improve Gut and Brain Health in Underserved Rural Older Adults with Mild Cognitive Impairment





Qian Zhang

College of Education, Health, and Human Sciences
Educational Psychology and Learning Systems
qzhang4@fsu.edu

Expertise:

- Statistical analysis
- Model building
- Consultation



Research Experience / Interests in Mental & Behavioral Health

- Causal inferences under experimental or quasi-experimental studies
- Longitudinal data analysis
- Development of causal mediation models and study of existing models
- Addressing issues in synthesizing effects using multilevel models and multilevel structural equation models
- Non-parametric modeling and machine learning algorithms
- Intervention studies common in mental and behavioral health
- Handling measurement error in psychological measurements through model design

Skills and resources I bring to the collaboration

- Statistical design, modeling, and analysis
- Methodology
- Quantitative analysis
- Student training in statistics
- Treating sub-optimal data conditions (e.g., missing data)

Skills and resources I'd like to find through collaboration

- Mental and behavioral health researchers conducting intervention studies
- Multi-site trials

Recent or Ongoing Projects to Highlight

- BRITE Girls Online STEM Practices: Building Relevance and Identity to Transform Experiences
- Who Implements Response to Intervention (RTI) in Math, and Does RTI Benefit Math Achievement? K-fold Cross-Validation and Causal Inference under A Multilevel Quasi-Experimental Study
- Handling Covariate Selection Uncertainty and Measurement Error in Causal Mediation Analysis: Two-Step Approach to More Accurate Intervention Studies



Jie Chen

College of Nursing

jc22db@fsu.edu

Expertise:

- Pain and symptom management
- Gut-brain axis
- Multi-omics

Research Experience / Interests in Mental & Behavioral Health

- Focus on pain and symptom management in older adults with multiple chronic conditions (MCC), i.e., cancer and cardiovascular disease
- Bio-behavioral and multi-omics mechanisms of pain and pain self-management among older adults with MCC

Skills and resources I bring to the collaboration

- Pain and symptom management
- Gut-brain axis
- Multi-omics approaches
- Healthy aging
- Cardio-oncology

Skills and resources I'd like to find through collaboration

- Brain health
- Neuromodulation
- EEG methods
- Cancer survivorship

Recent or Ongoing Projects to Highlight

- Phenotyping and biomarkers of pain in older adults with heart failure
- Mindfulness-based meditation for older adults with chronic low back pain
- Gut-brain axis and meditation for older adults with low back pain and depression
- Transcutaneous auricular vagus nerve stimulation





Karen Oehme

College of Social Work
Institute for Family Violence Studies
koehme@fsu.edu

Expertise:

- Trauma
- Resilience
- Online trainings

Research Experience / Interests in Mental & Behavioral Health

- Interest in neurodiversity and mental health
- Experience in online learning for professionals (e.g., judges, social workers, healthcare professionals, and others)
- Experience with broad, multidisciplinary teams

Skills and resources I bring to the collaboration

- Large-scale online trainings
- Deep knowledge of trauma science
- Translating research into animation, video, and alternate learning platforms for broad dissemination

Skills and resources I'd like to find through collaboration

- Willingness to work with a team
- Building large-scale professional development opportunities at FSU on mental and behavioral health
- College student well-being
- Higher ed advances in student wellness

Recent or Ongoing Projects to Highlight

- Student Resilience Project: <https://strong.fsu.edu>
- Successful Coparenting After Divorce: <https://coparenting.fsu.edu>
- College Student Wellbeing, Trauma, and Resilience: <https://learningforlife.fsu.edu/professional-certification-college-student-wellbeing/>





Patrick Merle

College of Communication and Information
Director, School of Communication

pmerle@fsu.edu

Expertise:

- Experiment
- Crisis communication
- International

Research Experience / Interests in Mental & Behavioral Health

- Behavioral health for older adults
- How to best communicate to older adults
- Effects of misleading scientific claims

Skills and resources I bring to the collaboration

- Methodology, experiments, surveys
- Expertise in communication theories

Skills and resources I'd like to find through collaboration

- Medical initiatives
- Interdisciplinary approaches

**COLLABORATIVE
COLLISION @FSU**





F. Andrew Kozel

College of Medicine
Behavioral Sciences and Social Medicine
Director, FSU Neuromodulation
fkozel@fsu.edu

Expertise:

- Psychiatry
- Neuromodulation
- Neuroimaging

Research Experience / Interests in Mental & Behavioral Health

- Board-certified psychiatrist
- Work with neuroimaging and neuromodulation has included research, clinical care, teaching, and dissemination for over 25 years
- Research uses brain imaging and brain stimulation to better understand and treat neuropsychiatric disorders with the focus of improving the lives of patients with these devastating disorders
- Providing psychiatric care for patients in multiple settings including treating with TMS and other neuromodulation interventions

Skills and resources I bring to the collaboration

- Multiple neuromodulation techniques
- fMRI and fNIRS technology
- Clinical assessment of adults with neuropsychiatric disorders
- Clinical study design and management
- Grant writing and dissemination

Skills and resources I'd like to find through collaboration

- Clinical trial statistical expertise
- Social media and community-based recruitment methods
- Patients with neuropsychiatric disorders and/or chronic pain
- Advanced neuroimaging analysis
- Bioengineering device development

Recent or Ongoing Projects to Highlight

- TMS and CPT in combat Veterans with PTSD
- Neuromodulation for dysphoria (depression, anxiety, PTSD, chronic pain)
- Personalized dosing of non-invasive brain stimulation using fNIRS-TMS technology
- Using neuromodulation to improve post-surgical orthopedic outcomes





Karina Donald

College of Fine Arts

Art Education

kdonald@fsu.edu

Expertise:

- Arts-based research
- Family resilience
- Underserved communities

Research Experience / Interests in Mental & Behavioral Health

- Culturally responsive therapeutic interventions tailored to underserved communities affected by trauma
- Spirituality, spiritual practices, and resilience among Caribbean families
- Visual art expressions of resilience
- Integrating arts-based research and qualitative approaches to explore resilience in underserved communities
- Develop targeted interventions for Caribbean communities and beyond

Skills and resources I bring to the collaboration

- Trauma-informed clinical practice
- Collaboration and community engagement
- Arts-based research
- Mixed methods research
- Cultural competency, sensitivity, and responsiveness

Skills and resources I'd like to find through collaboration

- Culturally responsive intervention development
- Experience with community engagement and implementation
- Interdisciplinary research teams
- Grant writing/funding opportunities
- International collaboration

Recent or Ongoing Projects to Highlight

- "History of Afro-Caribbean Communities and Mental Health Support"
- "Exploring Spirituality and Caribbean Family Resilience"
- Presentation and publication on Black Female Singlehood
- Mixed methods research on Caribbean family resilience





Lori Gooding

College of Music
Music Therapy | Center for Research in Music;
Center for Infant and Child Medical Music Therapy
lgooding@fsu.edu

Expertise:

- Music
- Psychosocial
- Integrative



Research Experience / Interests in Mental & Behavioral Health

- Clinical experience in behavioral health settings
- Biopsychosocial needs of medical patients (particularly anxiety, chronic illness)
- Music majors with mental health conditions
- Parents' needs in the NICU (particularly stress, anxiety, and coping)
- Military populations (PTSD primarily)
- Music combined with neurostimulation for PTSD
- Integrative and patient and family-centered care

Skills and resources I bring to the collaboration

- Clinical experience in mental/behavioral health and healthcare administration
- Grant review skills
- New perspective on options for symptom management and skill development

Skills and resources I'd like to find through collaboration

- New opportunities to connect music with techniques/strategies from other disciplines
- Build ongoing relationships that inform continued research
- Connect with experts in other areas to enhance potential for grant funding

Recent or Ongoing Projects to Highlight

Collaborating with colleagues from the College of Medicine to combine music with Transcranial Magnetic Stimulation (TMS) to explore the potential of music as a neuromodulator to address symptoms of individuals with PTSD.

Our goal is to establish a multidisciplinary collaboration and explore the feasibility of combining music with TMS to determine if adding music will increase engagement with treatment.



Quancai Sun

College of Health and Human Sciences
Health, Nutrition, and Food Sciences
qsun@fsu.edu

Expertise:

- Gut Microbiota
- Obesity
- Functional Foods

Research Experience / Interests in Mental & Behavioral Health

- Mechanistic study of phytochemicals in the prevention of chronic diseases as well as food contaminants in the development of obesity, T2D, and colon inflammation
- Interdisciplinary approaches from food biochemistry
- Phytochemicals and their beneficial influence on human health
- Dietary proteins/peptides and their beneficial influence on gut microbiota and colon health
- Food contaminants and their potential influence on gut microbiota, colon health, as well as obesity

Skills and resources I bring to the collaboration

- Gut microbiota analysis
- Expert knowledge in obesity, type 2 diabetes, colitis, and functional foods

Skills and resources I'd like to find through collaboration

- Metabolomics
- Gene knockout models
- Liver diseases
- Gut-brain axis research
- Histology

Recent or Ongoing Projects to Highlight

The interaction of fish peptides with gut microbiota to prevent colitis

Influence of insecticides on obesity development





Mandy Bamber

College of Nursing

mbamber@fsu.edu

Expertise:

- Parent Caregivers
- Distress
- Children with Medical Complexity

Research Experience / Interests in Mental & Behavioral Health

- Inflammatory biomarkers, psychological wellbeing, and distress in parent caregivers of children with special healthcare needs
- Negative affect, caregiver burden, burnout, resilience, self-esteem, quality of life, and selfcare
- Use of self-implemented selfcare interventions to improve parent/caregiver physical and mental health
- Mindfulness-based interventions and their effect on negative affect and mental wellbeing

Skills and resources I bring to the collaboration

- Access to the local obstetric and pediatric medical community
- Connections with parent support groups and networks
- mHealth app company collaboration
- Meta-analysis methods

Skills and resources I'd like to find through collaboration

- mHealth/digital health intervention
- Biostatistics, usability, feasibility, and acceptability testing
- Expertise with extramural grants
- Caregiver, healthcare, and child perspectives on living with special needs

Recent or Ongoing Projects to Highlight

Developing/building upon a comprehensive mobile digital health application that includes various selfcare activities such as mindfulness, exercise and social support for parents of children with special healthcare needs, and impact on parent caregiver psychological wellbeing





Kadir Kozan

College of Education, Health, and Human Sciences
Educational Psychology and Learning Systems
kkozan@fsu.edu

Expertise:

- Learning and performance technologies
- Performance involvement
- Instructional design

Research Experience / Interests in Mental & Behavioral Health

- Learning and performance technologies and technology-enhanced performance improvement as it applies to Mental and Behavioral Health
- Instructional and non-instructional interventions which enhance people's performance in relation to Mental and Behavioral Health

Skills and resources I bring to the collaboration

- Rigorous research design and methods knowledge
- Low-cost, low-effort wise psychological interventions
- Design, development and evaluation of learning and performance technologies and technology-enhanced performance improvement
- Transfer of learning and performance

Skills and resources I'd like to find through collaboration

- Insights into mental and behavioral health research
- Medical research and precision medicine and education
- Data analysis and reporting in mental health and behavioral health
- Effective and efficient intervention in mental and behavioral health

Recent or Ongoing Projects to Highlight

Research study on the design, development, and evaluation of AI-powered technologies to enhance STEM learning/education

For the first phase, we have launched a smaller study focusing on studying/learning and note-taking strategies employed by first-year college STEM students





Kim Davidson

College of Criminology & Criminal Justice

kdavidson@fsu.edu

Expertise:

- Criminal justice
- Qualitative
- Substance use

Research Experience / Interests in Mental & Behavioral Health

- Substance use disorders
- Criminal justice system
- Treatment programming
- Criminalization of relapse
- Simultaneous reentry & recovery pathways
- Program implementation and evaluation within the scope of the criminal justice system

Skills and resources I bring to the collaboration

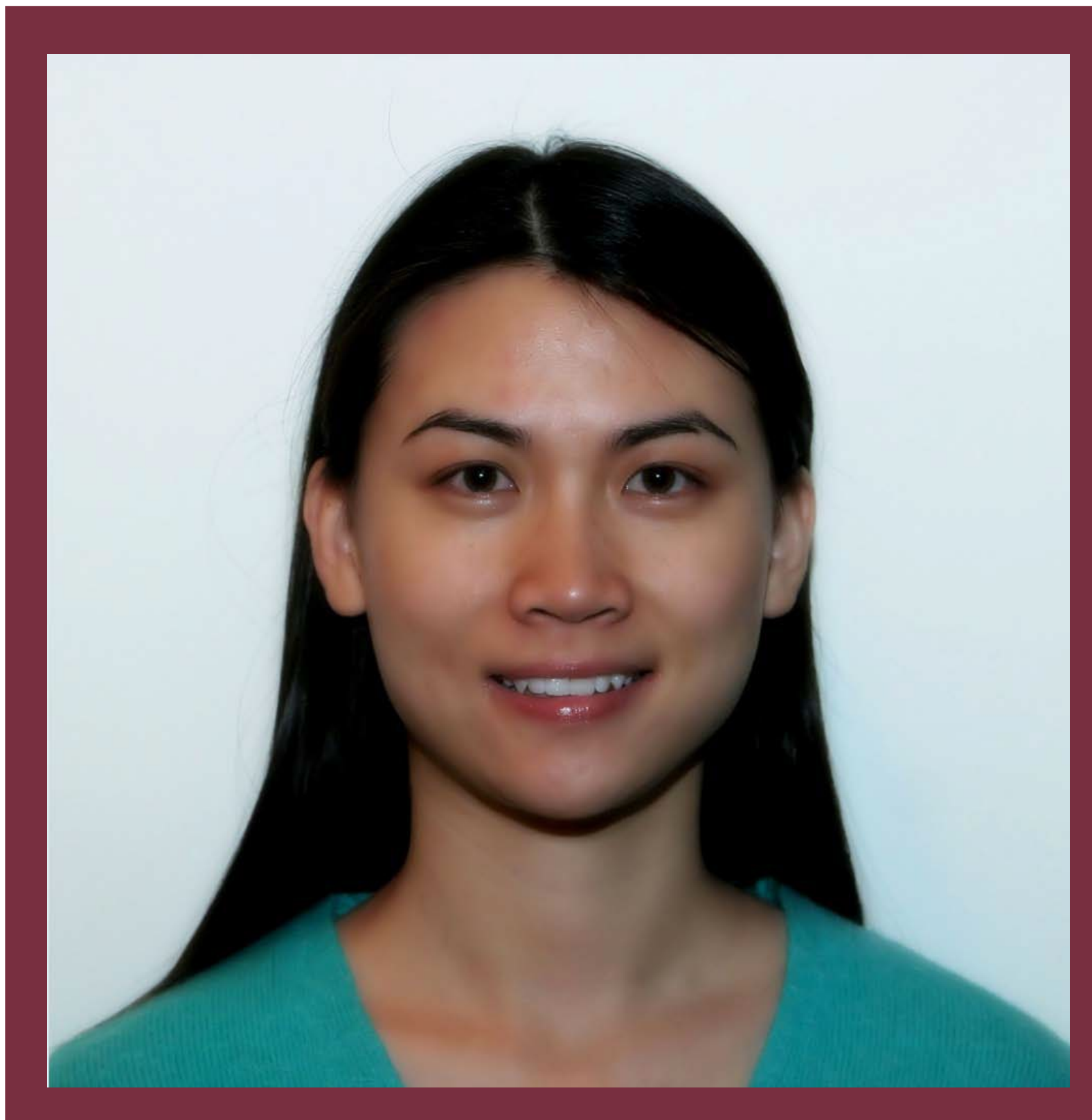
- Qualitative methods in both data collection and analysis
- Expertise on the overlapping nature of mental and behavioral health
- Expertise on the criminal justice system

Skills and resources I'd like to find through collaboration

- Expertise in substance use
- Familiarity with local policy-relevant research

**COLLABORATIVE
COLLISION @FSU**





Hongyuan Cao

College of Arts and Sciences

Statistics

hcao@fsu.edu

Expertise:

- Big data
- Causal inference
- Survival analysis

Research Experience / Interests in Mental & Behavioral Health

- Epidemiological and clinical study design
- Statistical modeling
- Data analysis
- Alzheimer's Disease
- Dementia
- Psychiatric disorders

Skills and resources I bring to the collaboration

- Interdisciplinary approach to scientific problems
- Statistical modeling
- Data analysis
- Treatment effect estimation
- Application of state-of-the-art statistical methods to applied problems

Skills and resources I'd like to find through collaboration

- Access to populations/data sets
- Domain knowledge of the scientific problem

Recent or Ongoing Projects to Highlight

Study on clinical risk factors that affect the duration of hospital stay for COVID-19 patients





Anand (Sunny) Narayanan

College of Education, Health, and Human Sciences
Health, Nutrition, and Food Sciences
anarayanan@fsu.edu

Expertise:

- Cardiovascular physiology
- Immunology
- Interdisciplinary research

Research Experience / Interests in Mental & Behavioral Health

- Ongoing mental health research projects through the FSU Global Health Collaboration Program (<https://globalhealthfsufam.wixsite.com/my-site>)
- Collaborative behavioral health projects through NASA

Skills and resources I bring to the collaboration

- Cardiovascular Physiology (e.g. translational research)
- Immunology
- Musculoskeletal
- Engineering
- Experience in collaborating
- Experience with NASA, NIH, NSF

Skills and resources I'd like to find through collaboration

- (Bio)statistics
- Computational data analysis
- Cell culture/tissue chip experience
- Human research experience
- Grant writing experience with NSF/NIH faculty-level proposals

Recent or Ongoing Projects to Highlight

- NASA study investigating the effects of different states of gravity (e.g., micro-, Lunar-, and Martian-gravity), radiation, and sex differences on physiology
- Global health projects investigating mental and behavioral health adaptations in rural and disadvantaged communities and environments: <https://globalhealthfsufam.wixsite.com/my-site>





Sri Manchiraju

Jim Moran College of Entrepreneurship
Retail

smanchiraju@fsu.edu

Expertise:

- Consumer Well-Being

Research Experience / Interests in Mental & Behavioral Health

- Mental and behavioral health from a psychology and marketing perspective
- Behavioral addictions
- Materialism
- Body image
- Loneliness

Skills and resources I bring to the collaboration

- Diverse perspective
- Literature Reviews
- Familiarity with a range of topics within psychology and marketing

Skills and resources I'd like to find through collaboration

- Networking
- Statistical analyses
- Identify pertinent grants

Recent or Ongoing Projects to Highlight

AI & Ethics

Metaverse Consumer Behavior

Culture and Environmentalism

Body Art





Amy Ai

College of Social Work

aai@fsu.edu

Expertise:

- Behavioral health
- Trauma
- Positive psychology

Research Experience / Interests in Mental & Behavioral Health

- Cardiac Behavioral Health
- Disasters and Trauma
- Positive Psychological Attributes and Outcomes
- Racial Disparities in Health and Mental Health
- Spirituality
- Clinical Research, Survey, and Secondary analyses of all these topics

Skills and resources I bring to the collaboration

- Clinical Experiences in Chronic Conditions
- Research Design on Clinical Trials
- Population Studies on Disparities
- Broad Interdisciplinary Collaboration Skills
- Crisis and Disaster Related Behavioral Health Expertise

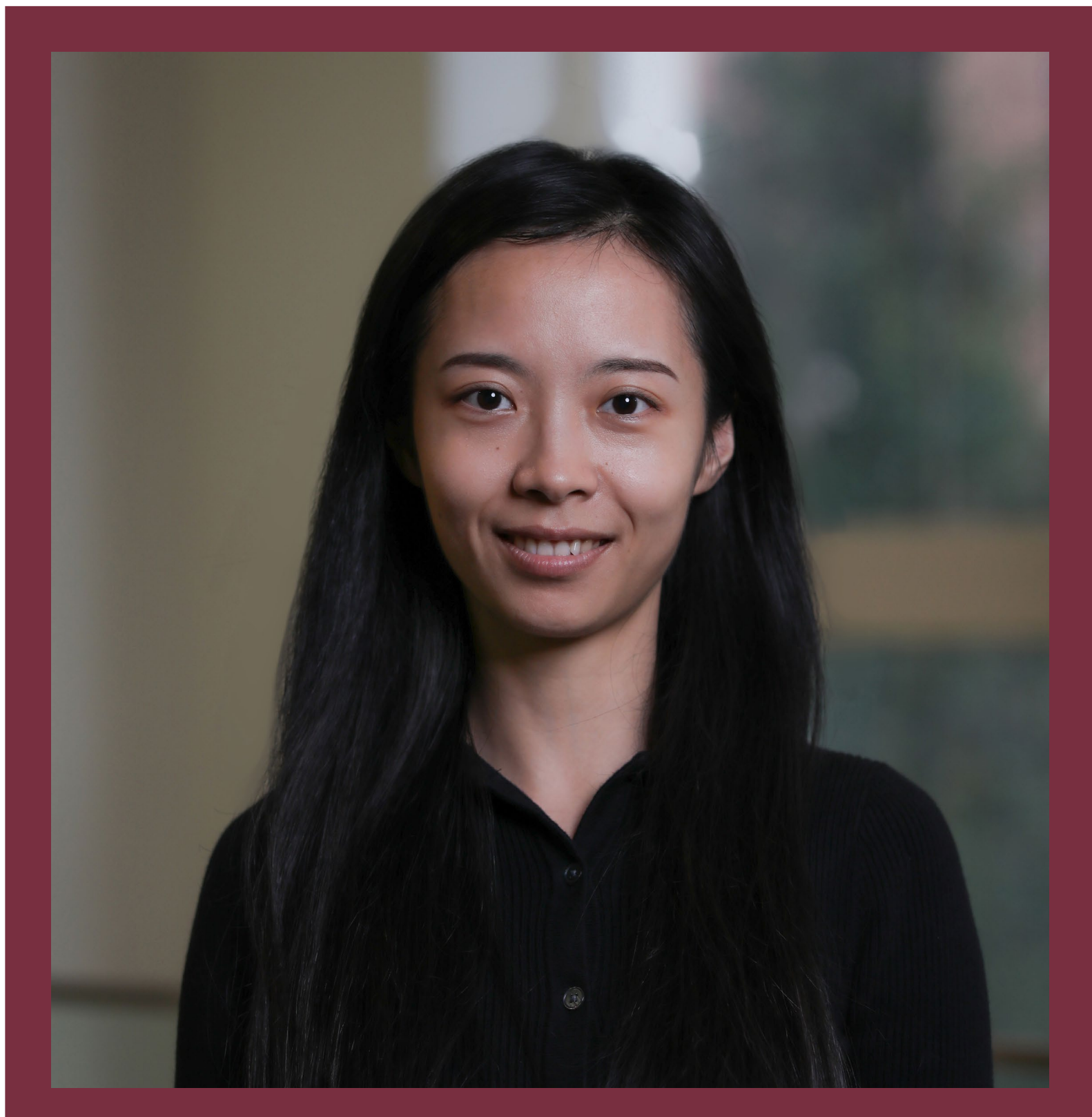
Skills and resources I'd like to find through collaboration

- Survival Analysis
- Meta Analysis
- Bayesian Analysis
- LGM Analysis
- Advanced Data Management on Complex Files

Recent or Ongoing Projects to Highlight

- Role of Psychological Strength Factors on Long-Term Survival of Older Adults with Advanced Heart Diseases & Underlying Mechanisms
- Traumatization and Resilience Following Hurricanes Maria and Michael in Florida: Positive Media and Posttraumatic Growth





Zhaoxue Tong

College of Arts and Sciences

Statistics

zt23g@fsu.edu

Expertise:

- High-dimensional statistical learning
- Robust statistics
- Social behavioral science

Research Experience / Interests in Mental & Behavioral Health

- High-dimensional data modeling, including variable selection, precision matrix estimation, false discovery rate control, robust regression, and high-dimensional inference
- Statistical applications in social behavioral science, genetics, and precision medicine
- Fostering Harassment-Free STEM Education, Research, and Workplace Environments
- Effective Preventions and Interventions for Human Development (Positive Psychology)

Skills and resources I bring to the collaboration

- Statistical modeling
- Experimental design
- Data management

Skills and resources I'd like to find through collaboration

- Recent advances in the area
- High-dimensional data resource
- Grant collaboration

Recent or Ongoing Projects to Highlight

- Robust varying coefficient model for heavy-tailed data
- Dynamic network analysis in high-dimension
- Subgroup analysis for precision medicine
- Federated learning and meta-analysis for multi-environment data integration





Shuyuan Metcalfe

College of Communication & Information
iSchool | iSensor Analytics Lab
smho@fsu.edu

Expertise:

- Trusted human computer interaction
- Information behavior
- Information seeking

Research Experience / Interests in Mental & Behavioral Health

- Cyberbullying information behavior through the lens of routine activity theory
- Social distance "nudging" during the pandemic, adopting the nudge theory
- Deceptive information behavior and correlating the information seeking behavior with mental and behavioral health

Skills and resources I bring to the collaboration

- Human computer interaction (HCI) experiments
- Design science

Skills and resources I'd like to find through collaboration

- Criminology
- Mental Health
- Psychology
- Machine learning / artificial intelligence

Recent or Ongoing Projects to Highlight

Deepfakes information manipulation

<https://veracity.cci.fsu.edu/>

Ethics and trust of artificial intelligence

Information seeking in uncertain and crisis situations





Heidi Gazelle

College of Education, Health, & Human Sciences
Human Development & Family Science
hgazelle@fsu.edu

Expertise:

- Anxiety
- Developmental psychopathology
- Interpersonal processes

Research Experience / Interests in Mental & Behavioral Health

- Defining the affective-behavioral construct of anxious solitude
- Child by environment interplay in the development of anxious solitude and psychosocial adjustment of anxious solitary children, adolescents and young adults
- Ecological transitions and the emergence of and change in anxious solitude and interpersonal difficulties over time
- Gender differences in the developmental significance of anxious solitude
- Cross sub-disciplinary integration and synthesis

Skills and resources I bring to the collaboration

- Multi-level, multi-method longitudinal data analysis
- Scientific writing
- Expertise in development of anxiety in youth & young adults
- Background in developmental theory

Skills and resources I'd like to find through collaboration

- Statistical modeling
- Expertise in genetic vulnerability to anxiety
- Ability to clinically assess anxiety
- Collaboration on publications & grants

Recent or Ongoing Projects to Highlight

Multiple Trajectories in Anxious Solitary

Youth: Young Adult Follow-up

